

OVER 60?

Secure this property
for up to **59% less!**



Price

£450,000

Freehold

3x  2x  1x 

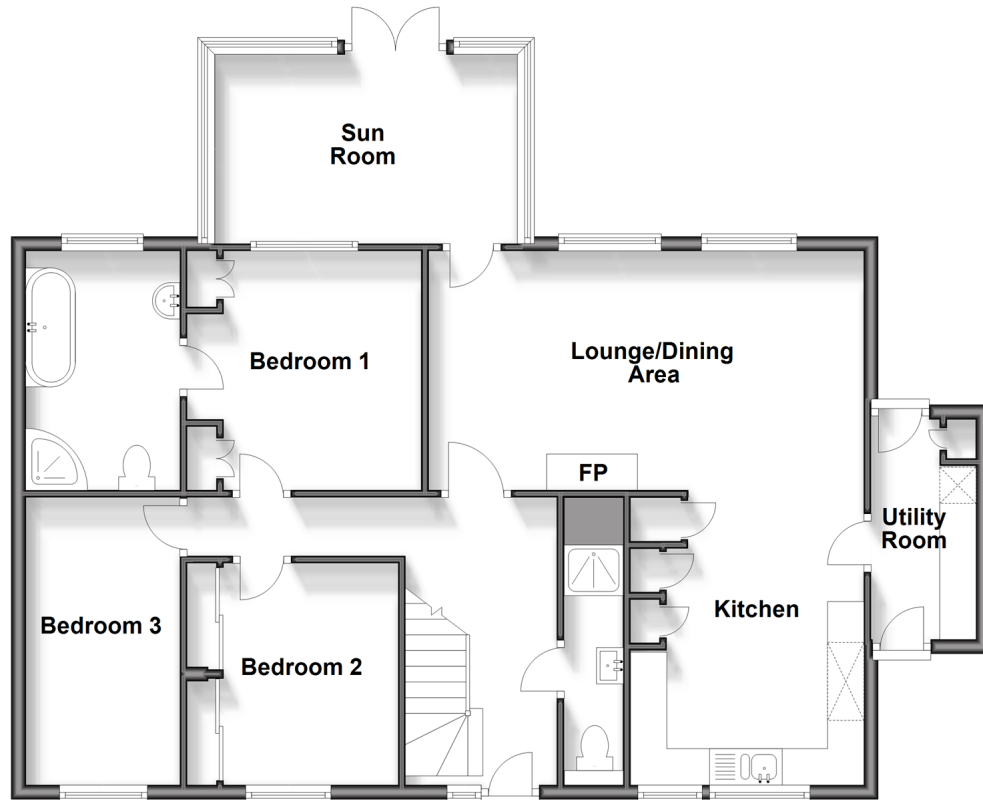
Westhill Road, Shanklin, Isle of Wight,

PO37

Pittis 
Helping you move forwards

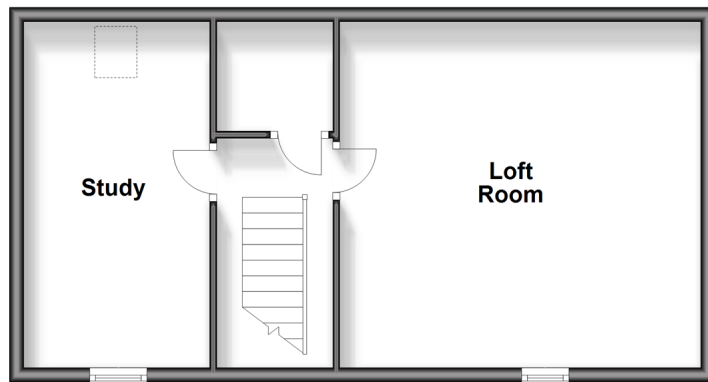
Ground Floor

Approx. 100.7 sq. metres (1084.2 sq. feet)



First Floor

Approx. 44.3 sq. metres (477.4 sq. feet)



Accommodation

GROUND FLOOR

Hallway

Shower Room

Lounge/Dining Area: 19'9 x 10'10 (6.02m x 3.30m)

Sun Room: 12'2 x 8'3 (3.71m x 2.52m)

Kitchen: 11'5 x 10'6 (3.48m x 3.20m)

Utility Room: 10'0 x 4'8 (3.05m x 1.42m)

Bedroom 1: 10'1 x 9'6 (3.08m x 2.90m)

En Suite Bathroom

Bedroom 2: 13'8 x 7'0 (4.17m x 2.14m)

Bedroom 3: 10'7 x 10'7 (3.23m x 3.23m)

FIRST FLOOR

Landing

Study: 8'0 x 8'0 (2.44m x 2.44m)

Loft Room: 16'0 x 8'0 (4.88m x 2.44m)

OUTSIDE

Front & Rear Gardens

Garage & Driveway

Summer house: 9'4 x 6'6 (2.85m x 1.98m)

Greenhouse

Workshop: 9'7 x 8'5 (2.92m x 2.57m)



Main features

- Detached individual chalet bungalow set in a private gated development
- Quiet & tranquil location with delightful gardens
- Large bespoke timber built barn garage with huge potential
- Principle accommodation on the ground floor with additional study/bedroom 4 & loft room on the first floor



Nearest Schools

The Bay CE School
Broadlea Primary School
Shanklin C of E Primary Schools
Gatten & Lake Primary School
Shanklin Pre-School & Nursery



Transport Information

Local buses providing Islandwide connections, plus local train station with direct links to Ryde Pier Head.



Address

Westhill Road, Shanklin, Isle of Wight, PO37



Directions

For directions to this property please contact us.

