



Price
£220,000

Freehold

2x  1x  1x 

**Atherley Park Close,
Shanklin, Isle Of Wight,
PO37**

OVER 60?

Secure this property
for up to **59% less!**

Pittis 
Helping you move forwards



Main features

- **Lovely modern terraced house in a quiet cul-de-sac**
- **Ideal first time buy or buy-to-let investment**
- **Downstairs cloakroom, allocated parking to front**
- **Under floor heating throughout**
- **Easy to maintain rear garden, short walk to town, chain free**

Accommodation

GROUND FLOOR

- Entrance Hall
- Cloakroom
- Kitchen: 8'8 x 7'8 (2.64m x 2.34m)
- Lounge/Dining Room: 14'4 x 13'7 (4.37m x 4.14m)

FIRST FLOOR

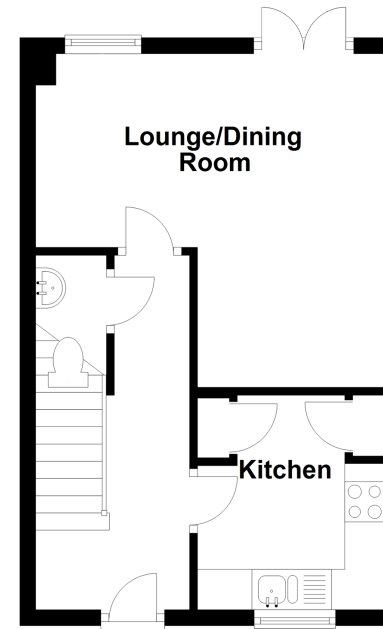
- Landing
- Bedroom 1: 10'11 x 9'11 (3.33m x 3.02m)
- Bedroom 2: 12'5 x 7'7 (3.79m x 2.31m)
- Bathroom

OUTSIDE

- Front & Rear Gardens
- Allocated Parking

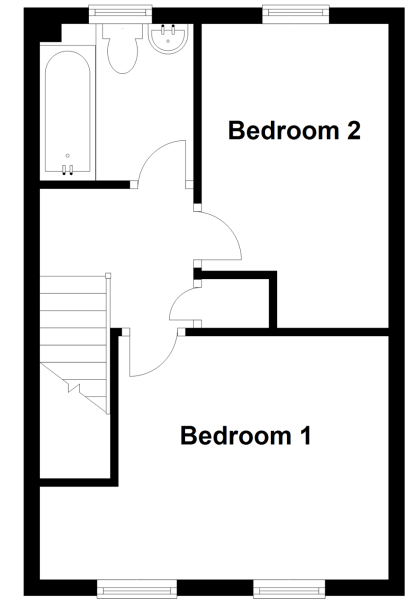
Ground Floor

Approx. 30.3 sq. metres (325.6 sq. feet)



First Floor

Approx. 30.3 sq. metres (325.6 sq. feet)



Call Shanklin - 01983 868777 ■ pittis.co.uk

- Legal advice should be taken to verify fixtures/fittings, planning, alterations and/or lease details
- Through a Homewise Home For Life Plan people aged 60+ can secure this property for up to 59% less, by purchasing a Lifetime Lease.

- Appliances & services are untested, dimensions are approximate and floor plans are not to scale



60619913/20240914/CS/CS