

OVER 60?

Secure this property
for up to **59% less!**



Price

£450,000

Freehold

4x  1x  1x 

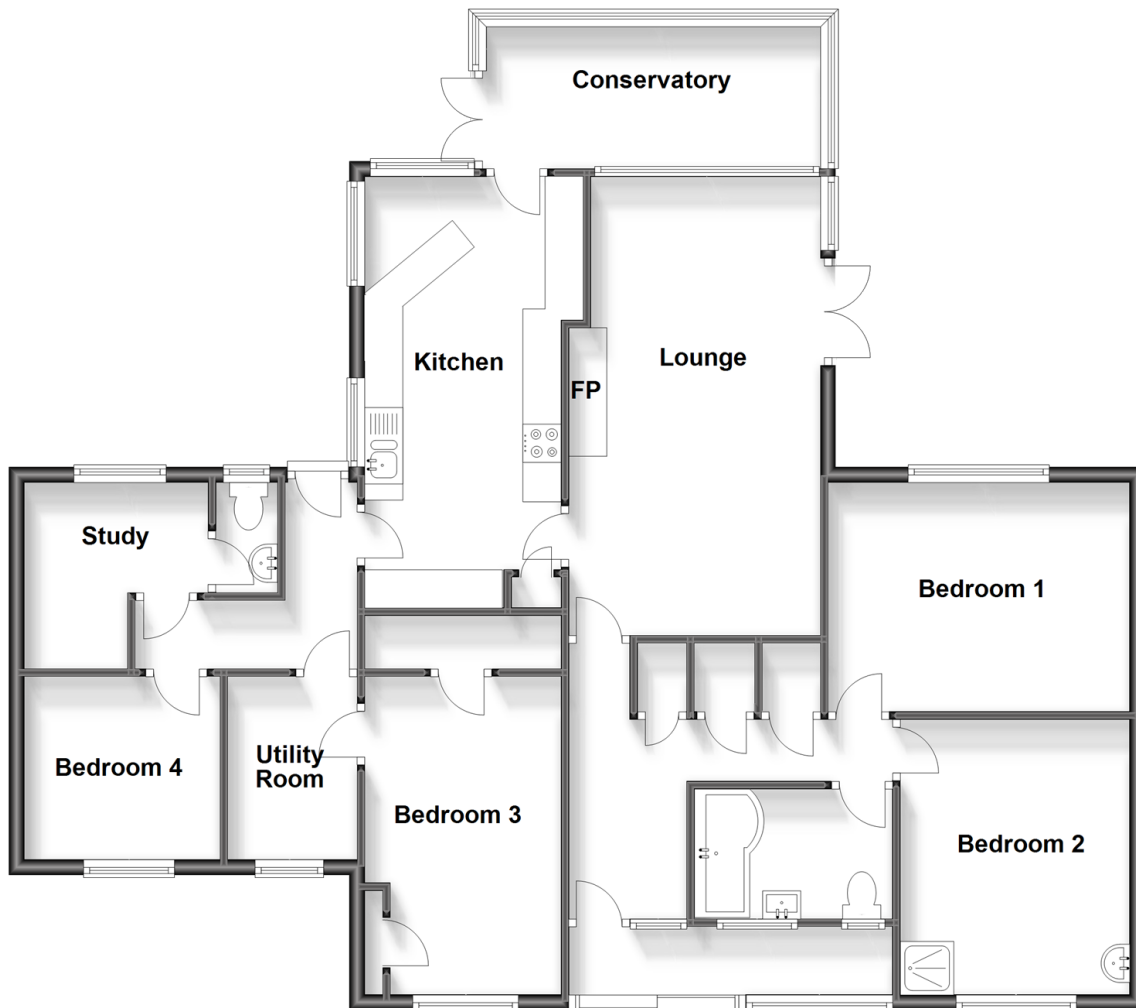
Windsor Drive, Shanklin, Isle of Wight,

PO37

Pittis 
Helping you move forwards

Ground Floor

Approx. 121.6 sq. metres (1309.0 sq. feet)



Accommodation

GROUND FLOOR

Porch

Hallway

Lounge: 20'10 x 11'0 (6.35m x 3.36m)

Study: 7'11 x 5'2 (2.41m x 1.58m)

Kitchen: 18'3 x 8'7 (5.57m x 2.62m)

Conservatory: 15'5 x 6'10 (4.70m x 2.08m)

Utility Room

Bathroom

Bedroom 1: 12'11 x 9'10 (3.94m x 3.00m)

Bedroom 2: 11'9 x 9'10 (3.58m x 3.00m)

Bedroom 3: 13'8 x 8'4 (4.17m x 2.54m)

Bedroom 4: 7'11 x 7'11 (2.41m x 2.41m)

Cloakroom

OUTSIDE

Double Garage & Driveway

Summer House/Bar

Workshop

Front & Rear Gardens



Main features

- Extended detached bungalow in a quiet sought after location on the outskirts of town
- Open plan kitchen area with conservatory & separate utility room
- Double garage and large driveway
- Wonderful gardens including summerhouse and workshop
- Chain free sale



Nearest Schools

The Bay CE School
Broadlea Primary School
Shanklin C of E Primary Schools
Gatten & Lake Primary School
Shanklin Pre-School & Nursery



Transport Information

Local buses providing Islandwide connections plus local train station with links to Ryde Pier Head and the mainland.



Address

Windsor Drive, Shanklin, Isle of Wight, PO37



Directions

For directions to this property please contact us.

