



Price
£285,000

Freehold

4x  2x  2x 

**St. John's Road,
Sandown, Isle of Wight,
PO36**

OVER 60?

Secure this property
for up to **59% less!**

Pittis 
Helping you move forwards

Accommodation

GROUND FLOOR

Hallway

Lounge: 14'0 x 13'9 (4.27m x 4.19m)

Dining Room: 11'9 x 11'9 (3.58m x 3.58m)

Kitchen: 11'6 x 8'8 (3.51m x 2.64m)

Utility Area: 8'6 x 5'1 (2.59m x 1.55m)

Cloakroom

FIRST FLOOR

Landing

Bedroom 1: 14'0 x 13'8 (4.27m x 4.17m)

En Suite Shower Room

Bedroom 2: 11'9 x 11'9 (3.58m x 3.58m)

Bedroom 3: 11'9 x 7'9 (3.58m x 2.36m)

Bedroom 4: 11'9 x 5'9 (3.58m x 1.75m)

Family Bathroom

OUTSIDE

Driveway Parking

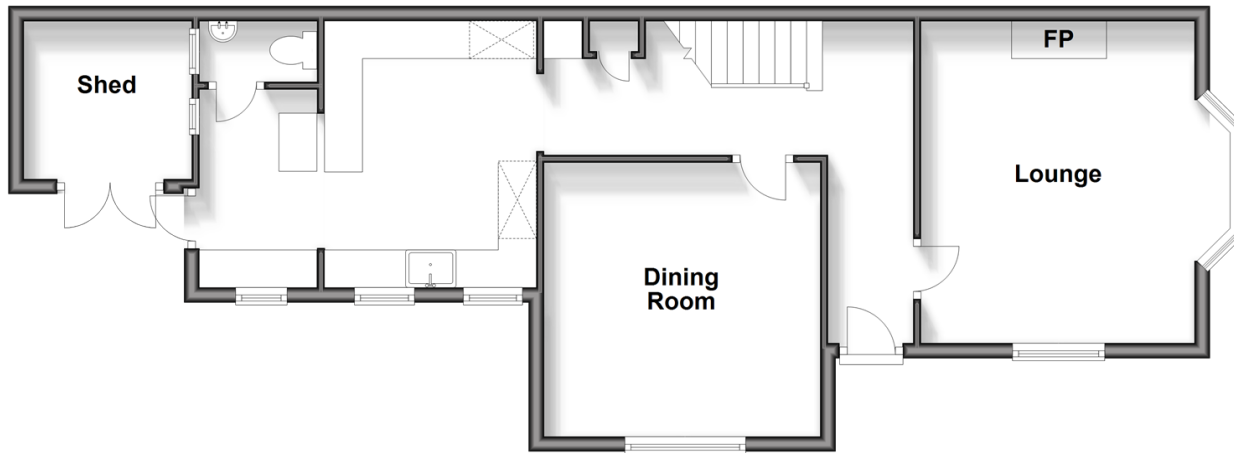
Front Walled Garden

Courtyard Rear Garden

Shed/Workshop

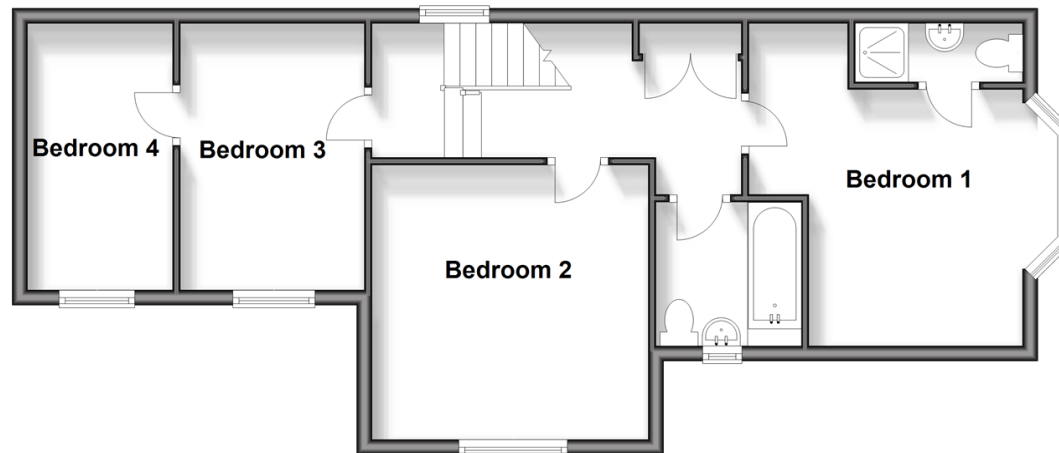
Ground Floor

Approx. 62.5 sq. metres (672.9 sq. feet)



Split Level First Floor

Approx. 57.7 sq. metres (620.7 sq. feet)





Main features

- Well presented end of terrace character house
- Plenty of rooms lending itself to a variety of uses and living arrangements
- Private walled courtyard garden and driveway
- Perfect home for a family or even as a bolt hole/holiday let
- In a superb location situated within a short walk to Sandown town centre and the beach front, with plenty of amenities and schools also nearby



Nearest Schools

The Bay CE School
Broadlea Primary School
Shanklin C of E Primary Schools
Gatten & Lake Primary School
Shanklin Pre-School & Nursery



Transport Information

Local buses providing Island wide connections plus local train station with direct links to Ryde Pier Head.



Address

St. John's Road, Sandown, Isle of Wight, PO36



Directions

For directions to this property please contact us.

