



OVER 60?

Secure this property
for up to **59% less!**

Price

£190,000

Freehold

3x  1x  2x 

**Lake Green Road,
Sandown, Isle of Wight,
PO36**

Pittis 
Helping you move forwards



Main features

- Semi-detached house in a quiet location perfect for a family
- Good sized rooms with potential for a kitchen/dining room
- In need of modernisation throughout
- Conservatory overlooking private lawned garden to the rear
- Offered to the market with no onward chain

Accommodation

GROUND FLOOR

Entrance Hall

Lounge: 10'9 x 9'9 up to bay (3.28m x 2.97m)

Dining Room: 11'0 x 10'9 up to bay (3.36m x 3.28m)

Kitchen: 11'2 maximum x 8'4 (3.41m x 2.54m)

Conservatory

FIRST FLOOR

Bedroom 1: 10'9 x 9'8 up to bay (3.28m x 2.95m)

Bedroom 2: 11'0 x 9'0 up to bay (3.36m x 2.75m)

Bedroom 3: 10'4 x 8'1 (3.15m x 2.47m)

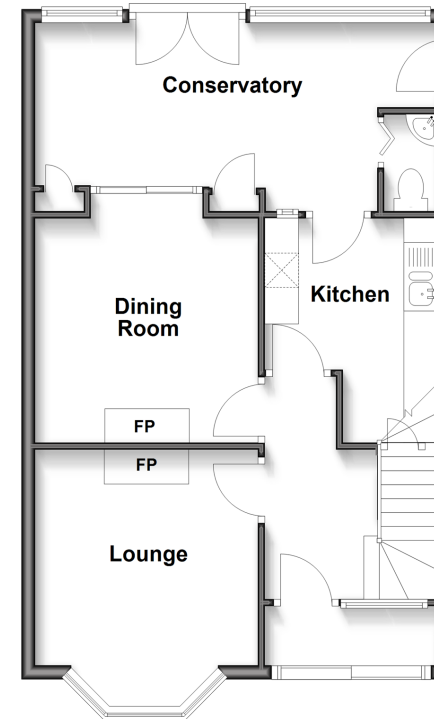
Bathroom

OUTSIDE

Front & Rear Gardens

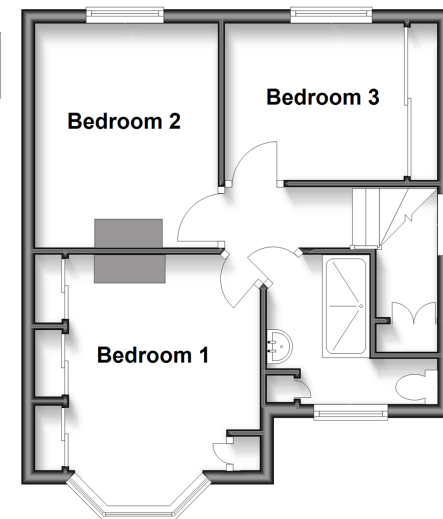
Ground Floor

Approx. 56.3 sq. metres (606.5 sq. feet)



First Floor

Approx. 36.7 sq. metres (395.0 sq. feet)



Call Sandown - 01983 407444 ■ pittis.co.uk

- Legal advice should be taken to verify fixtures/fittings, planning, alterations and/or lease details
- Appliances & services are untested, dimensions are approximate and floor plans are not to scale
- Through a Homewise Home For Life Plan people aged 60+ can secure this property for up to 59% less, by purchasing a Lifetime Lease.



60521220/20250623/DW/NR