



OVER 60?

Secure this property
for up to **59% less!**

Price

£270,000

Leasehold

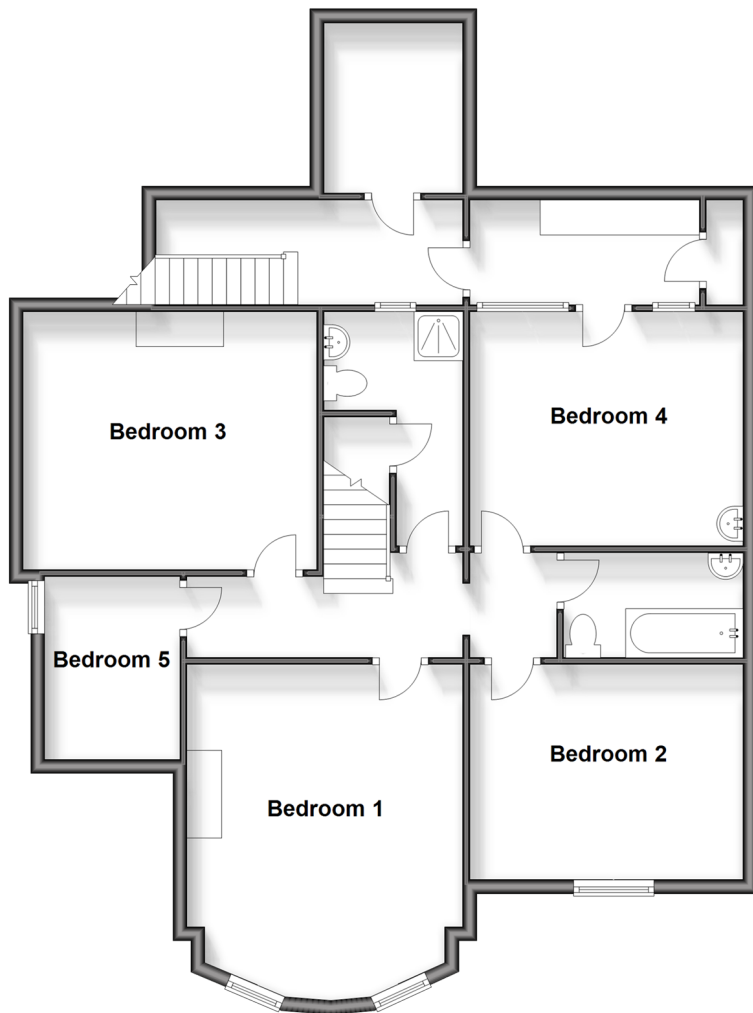
5x  2x  1x 

**Royal Crescent,
Sandown, Isle of Wight,
PO36**

Pittis 
Helping you move forwards

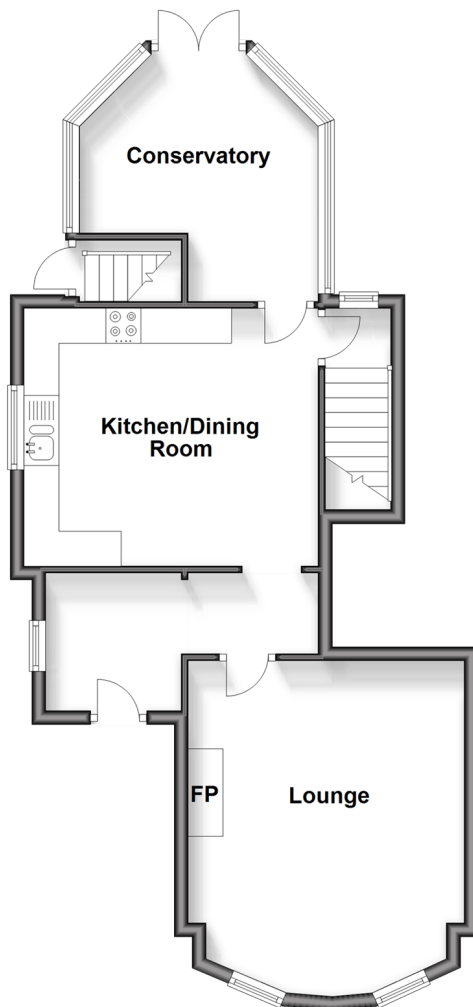
Lower Ground Floor

Approx. 102.6 sq. metres (1104.8 sq. feet)



Ground Floor

Approx. 54.2 sq. metres (583.4 sq. feet)



Accommodation

GROUND FLOOR

Hallway

Lounge: 14'7 x 13'4 (4.45m x 4.07m)

Kitchen/Dining Room: 14'0 x 9'10 (4.27m x 3.00m)

Conservatory: 12'1 x 11'7 (3.69m x 3.53m)

LOWER GROUND FLOOR

Landing

Bedroom 1: 14'7 into bay x 13'0 (4.45m x 3.97m)

Shower Room

Bedroom 2: 12'10 x 10'11 (3.91m x 3.33m)

Bedroom 3: 12'9 x 10'10 (3.89m x 3.30m)

Bedroom 4: 11'11 x 10'0 (3.63m x 3.05m)

Bedroom 5: 9'1 x 6'7 (2.77m x 2.01m)

Bathroom

OUTSIDE

Rear Garden

Allocated Parking



Main features

- Unique and substantial character maisonette
- Conservatory leading out onto private rear garden with side access
- Allocated parking space to the front
- Offered to the market with no onward chain
- Situated in a very convenient spot within a short walking distance to Sandown town centre and the beach front



Nearest Schools

The Bay CE School
Broadlea Primary School
Shanklin C of E Primary Schools
Gatten & Lake Primary School
Shanklin Pre-School & Nursery



Transport Information

Local buses providing Island wide connections plus local train station with direct links to Ryde Pier Head.



Address

Royal Crescent, Sandown, Isle of Wight, PO36



Directions

For directions to this property please contact us.

