



Price

£400,000

Freehold

3x  3x  2x 

Morton Old Road,
Brading, Sandown, Isle
of Wight, PO36

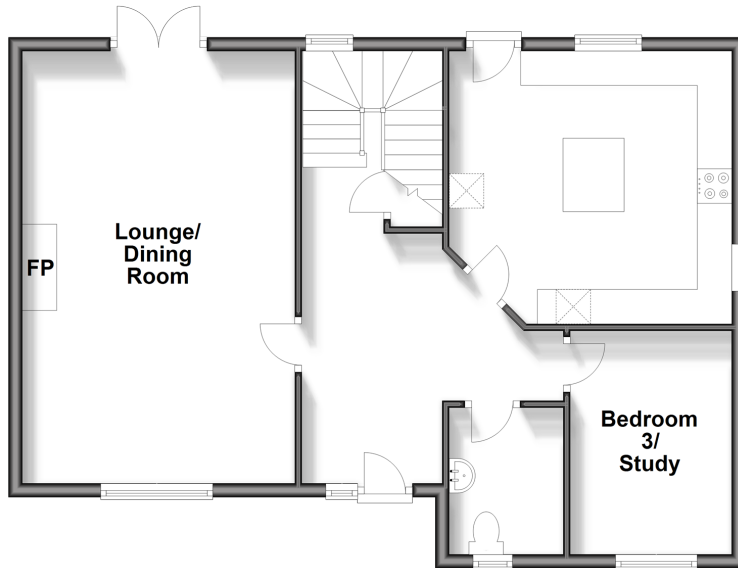
OVER 60?

Secure this property
for up to **59% less!**

Pittis 
Helping you move forwards

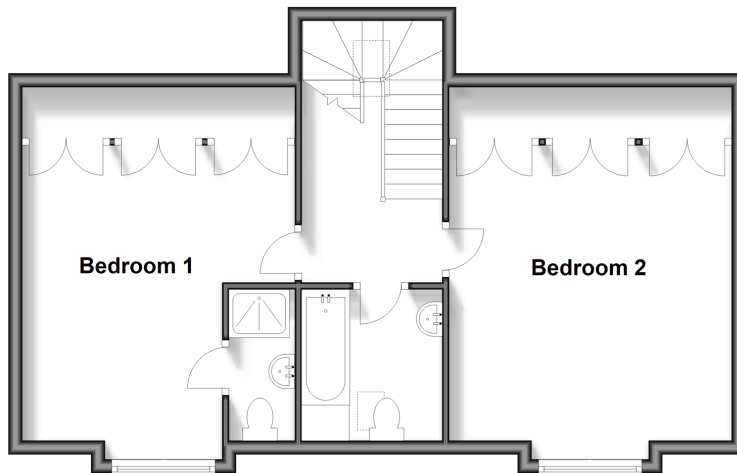
Ground Floor

Approx. 68.8 sq. metres (740.4 sq. feet)



First Floor

Approx. 55.8 sq. metres (600.5 sq. feet)



Accommodation

GROUND FLOOR

Hallway

Lounge/Dining Room: 20'8 x 12'11 (6.30m x 3.94m)

Kitchen/Breakfast Room: 13'5 x 13'0 (4.09m x 3.97m)

Bedroom 3/Study: 10'6 x 7'9 (3.20m x 2.36m)

Shower Room

FIRST FLOOR

Landing

Bedroom 1: 14'6 x 13'0 (4.42m x 3.97m)

En Suite Shower Room

Bedroom 2: 14'6 x 13'6 (4.42m x 4.12m)

Bathroom

OUTSIDE

Detached Garage

Driveway

Rear Gardens



Main features

- Beautiful & well presented detached house
- Tranquil location on the outskirts of Brading
- Detached garage and large driveway with plenty of parking
- Low maintenance enclosed rear garden with stunning views overlooking the countryside
- Located on a quiet road but still within easy reach of local transport links and nearby Sandown & Ryde



Nearest Schools

The Bay CE School
Broadlea Primary School
Shanklin C of E Primary Schools
Gatten & Lake Primary School
Shanklin Pre-School & Nursery



Transport Information

Local buses providing Islandwide connections, plus local train station with direct links to Ryde Pier Head.



Address

Morton Old Road, Brading, Sandown, Isle of Wight, PO36



Directions

For directions to this property please contact us.

