



**OVER 60?**  
Secure this property  
for up to **59% less!**

**Price**  
**£495,000**  
**Freehold**

3x  2x  2x 

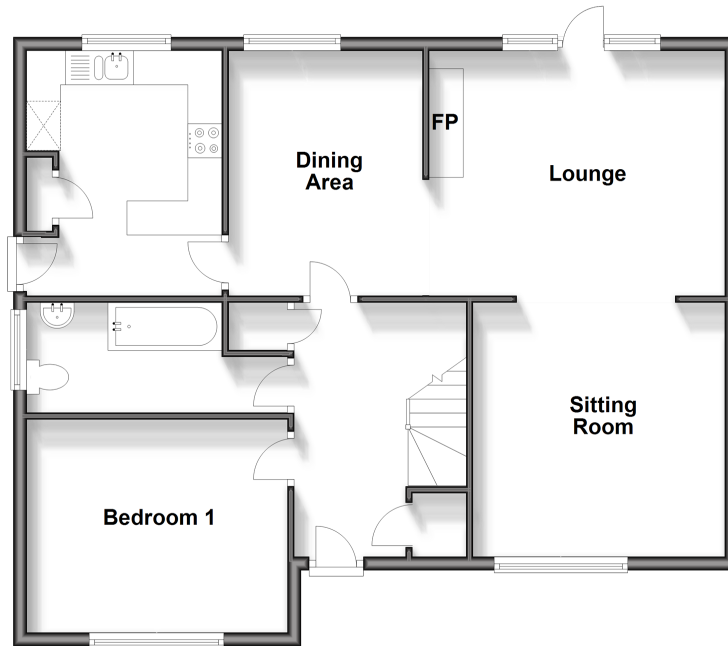
Youngwoods Way, Sandown, Isle of Wight,  
PO36

**Pittis**   
Helping you move forwards



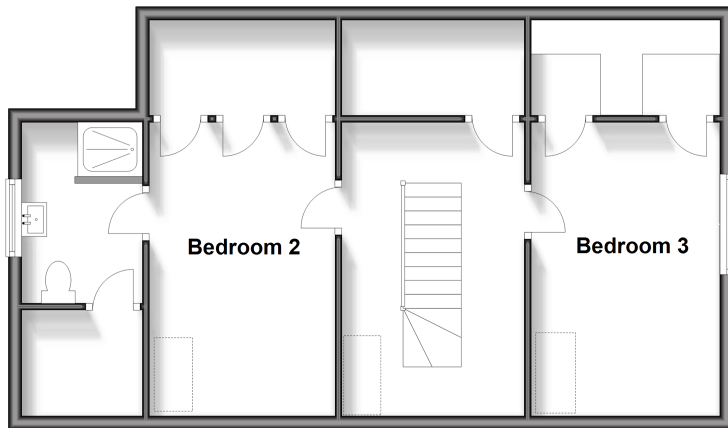
### Ground Floor

Approx. 80.7 sq. metres (869.0 sq. feet)



### First Floor

Approx. 57.1 sq. metres (614.2 sq. feet)



## Accommodation

### GROUND FLOOR

Porch

Hallway

Lounge: 24'7 x 12'5 (7.50m x 3.79m)

Dining Area: 12'0 x 8'8 (3.66m x 2.64m)

Kitchen: 12'0 x 10'0 (3.66m x 3.05m)

Bathroom

Bedroom 1: 12'10 x 10'3 (3.91m x 3.13m)

### FIRST FLOOR

Landing

Bedroom 2: 14'0 x 8'11 (4.27m x 2.72m)

Shower Room

Bedroom 3: 14'0 x 8'8 (4.27m x 2.64m)

### OUTSIDE

Garage & Driveway

Front & Rear Gardens

Workshop: 19'7 x 8'7 (5.97m x 2.62m)

Balcony



## Main features

- Beautiful detached chalet-bungalow
- Located within an Area of Outstanding Natural Beauty with gorgeous surroundings
- Detached garage & workshop underneath with large driveway
- Balcony overlooking stunning rear garden with woodland views
- Ideal location with main towns Sandown & Shanklin only a short drive away.



### Nearest Schools

Sandham Middle School  
 Lake Middle School  
 Downside Middle School 4.7 miles  
 Sandown High School  
 Priory School



### Transport Information

Local buses providing Islandwide connections.



### Address

Youngwoods Way, Sandown, Isle of Wight, PO36



### Directions

For directions to this property please contact us.



