



**Modern  
Auction**

**£75,000**

**Leasehold**

2x  1x  1x 

**Stower Place, Sandown,  
Isle of Wight, PO36**

**OVER 60?**

Secure this property  
for up to **59% less!**

**Pittis**   
Helping you move forwards





## Main features

- Good sized ground floor purpose built apartment
- For sale by Modern Auction -T & C's apply
- Subject to an undisclosed Reserve price
- Buyer's fee's apply
- Quiet cul-de-sac location on the outskirts of town

## Accommodation

### GROUND FLOOR

#### Hallway

Lounge: 13'8 x 10'8 (4.17m x 3.25m)

Kitchen: 12'3 x 8'8 (3.74m x 2.64m)

Bedroom 1: 13'8 x 8'5 (4.17m x 2.57m)

Bedroom 2: 13'8 x 5'5 (4.17m x 1.65m)

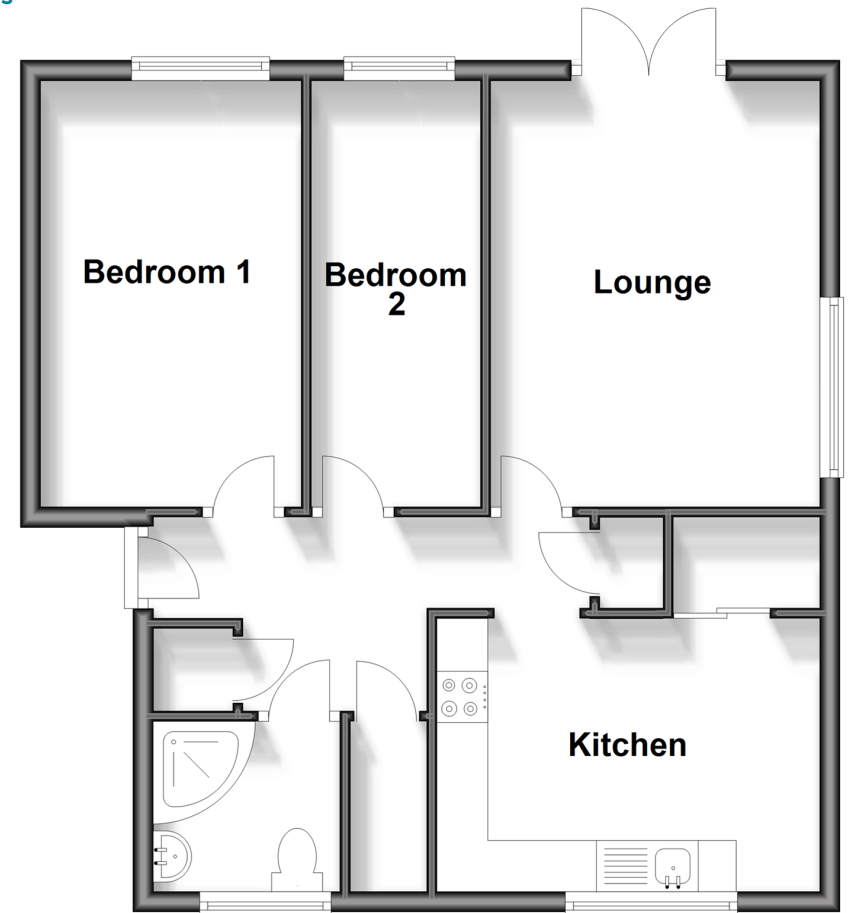
#### Bathroom

### OUTSIDE

Private Rear Garden

## Ground Floor

Approx. 56.5 sq. metres (607.9 sq. feet)



**Call Sandown - 01983 407444 ■ pittis.co.uk**

- Legal advice should be taken to verify fixtures/fittings, planning, alterations and/or lease details
- Appliances & services are untested, dimensions are approximate and floor plans are not to scale
- Through a Homewise Home For Life Plan people aged 60+ can secure this property for up to 59% less, by purchasing a Lifetime Lease.



60520588/20241019/DW/DW