

OVER 60?

Secure this property
for up to **59% less!**

Price

£425,000

Freehold

3x  2x  3x 

**The Mall, Lake Hill,
Sandown, Isle of Wight,
PO36**

Pittis 
Helping you move forwards

Accommodation

GROUND FLOOR

Hallway

Lounge: 17'3 x 13'0 (5.26m x 3.97m)

Conservatory: 22'0 x 6'9 (6.71m x 2.06m)

Dining Room: 13'2 x 12'2 (4.02m x 3.71m)

Breakfast Room: 13'0 x 11'0 (3.97m x 3.36m)

Kitchen: 11'2 x 10'9 (3.41m x 3.28m)

Shower Room

FIRST FLOOR

Landing

Bedroom 1: 17'3 x 12'10 (5.26m x 3.91m)

Bedroom 2: 13'0 x 10'0 (3.97m x 3.05m)

Bedroom 3: 9'10 x 9'8 (3.00m x 2.95m)

Bathroom

OUTSIDE

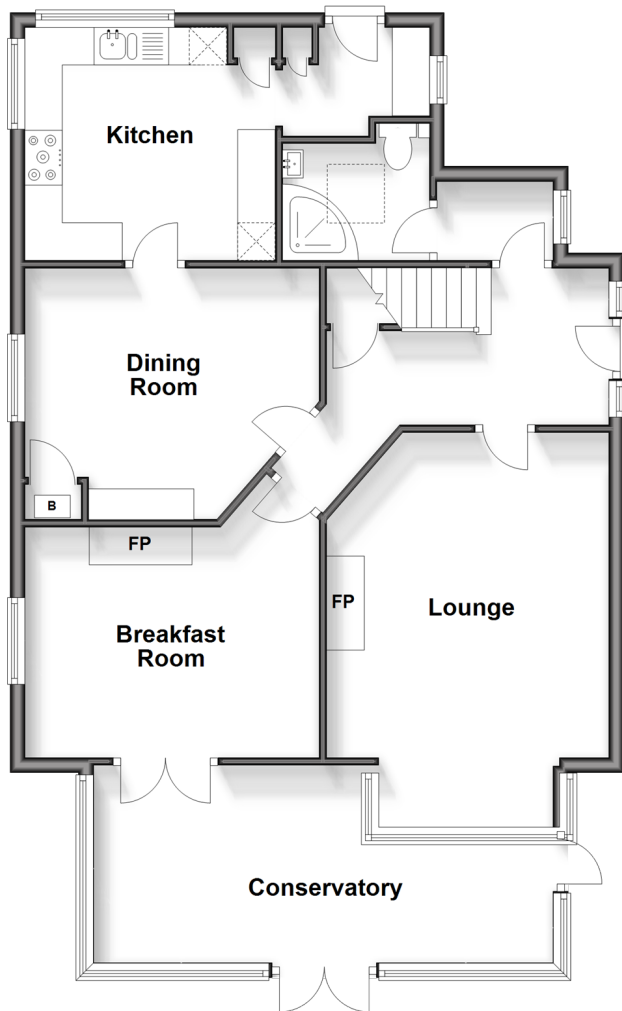
Driveway

Front & Rear Gardens

Summer house

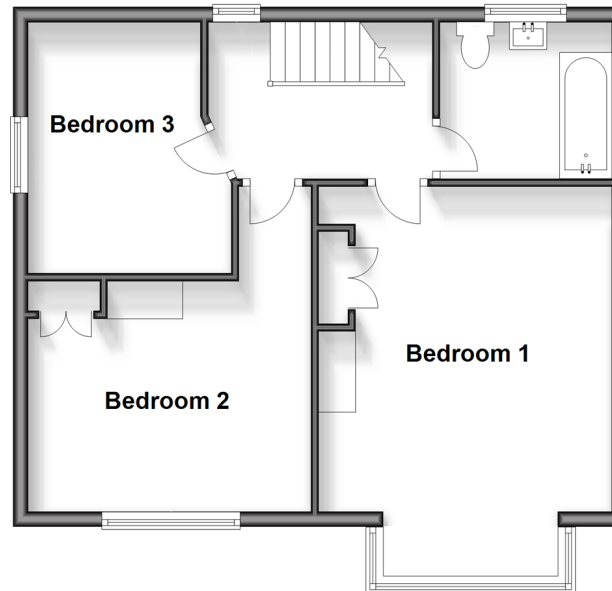
Ground Floor

Approx. 88.1 sq. metres (948.1 sq. feet)



First Floor

Approx. 52.0 sq. metres (559.9 sq. feet)





Main features

- Charming detached 1920's house with many original features
- Perfect family home with lots of living space
- Driveway to the front with plenty of parking
- Beautiful enclosed large front garden offering plenty of privacy in addition to rear patio
- Located within easy reach of both Sandown & Shanklin towns with local beaches also a short drive away



Nearest Schools

Sandham Middle School
Lake Middle School
Mayfield C of E Voluntary Controlled Middle School
Sandown High School
Priory School



Transport Information

Local buses providing Islandwide connections, plus local train station with direct links to the mainland.



Address

The Mall, Lake Hill, Sandown, Isle of Wight, PO36



Directions

For directions to this property please contact us.



Call Sandown Branch 01983 407444 ■ pittis.co.uk



■ Legal advice should be taken to verify fixtures/fittings, planning, alterations and/or lease details ■ Appliances & services are untested, dimensions are approximate and floor plans are not to scale
■ Through a Homewise Home For Life Plan people aged 60+ can secure this property for up to 59% less, by purchasing a Lifetime Lease.



60520996/20240408/NR/NR