



Price
£380,000

Freehold

4x  2x  3x 

**Grafton Street,
Sandown, Isle of Wight,
PO36**

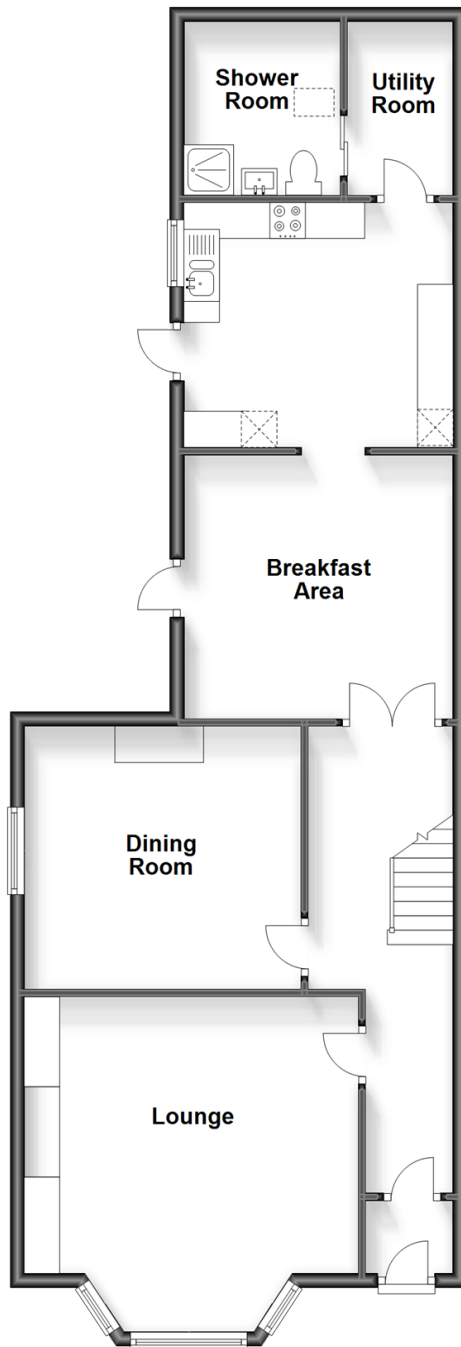
OVER 60?

Secure this property
for up to **59% less!**

Pittis 
Helping you move forwards

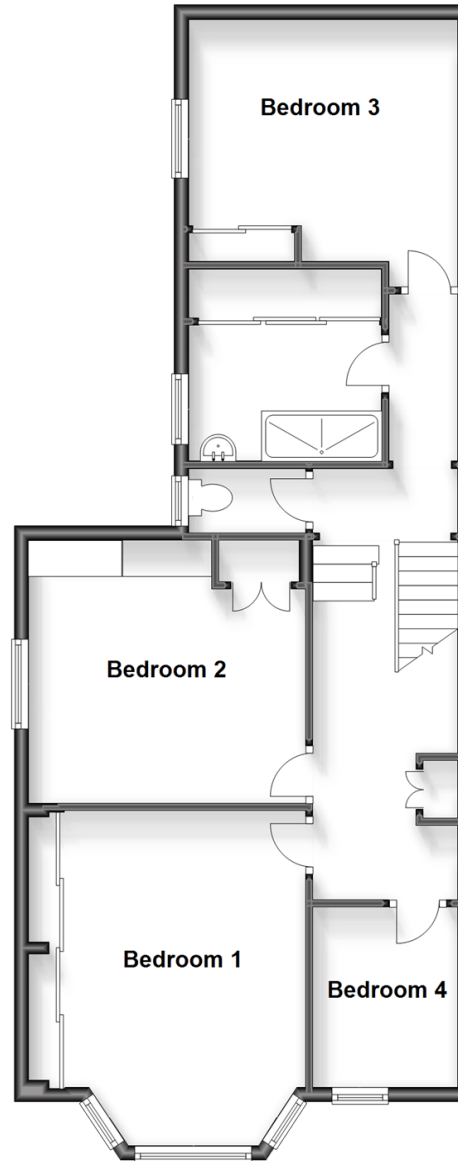
Ground Floor

Approx. 84.8 sq. metres (912.7 sq. feet)



Split Level First Floor

Approx. 75.1 sq. metres (808.7 sq. feet)



Accommodation

GROUND FLOOR

Entrance Hall

Lounge: 15'5 x 15'5 (4.70m x 4.70m)

Dining Room: 12'10 x 11'10 (3.91m x 3.61m)

Breakfast Area: 12'5 x 12'0 (3.79m x 3.66m)

Kitchen: 12'4 x 11'2 (3.76m x 3.41m)

Utility Room

Shower Room

FIRST FLOOR

Landing

Bedroom 1: 15'5 x 15'5 (4.70m x 4.70m)

Bedroom 2: 12'8 x 10'9 (3.86m x 3.28m)

Bedroom 3: 12'5 x 10'5 (3.79m x 3.18m)

Bedroom 4: 8'1 x 6'7 (2.47m x 2.01m)

Bathroom

Separate Toilet

OUTSIDE

Driveway

Rear Garden



Main features

- 4 bed semi-detached house with 3 receptions
- Beautifully presented throughout
- Lots of character features and good sized rooms
- Driveway to the front and side with plenty of parking
- Situated close to town with shops and transport links close by and the local beach just a short walk away



Nearest Schools

Primary Schools: Sandham Middle School 0.3 miles, Lake Middle School 1.0 miles, Forelands Middle School 3.9 miles

Secondary Schools: Sandown High School 0.4 miles,



Transport Information

Train Stations: Sandown 0.2 miles, Lake 0.7 miles, Shanklin 1.7 miles



Address

Grafton Street, Sandown, Isle of Wight, PO36



Directions

For directions to this property please contact us.

