

**Price**  
**£345,000**

**Freehold**

4x  2x  3x 

**St. John's Road,  
Sandown, Isle of Wight,  
PO36**

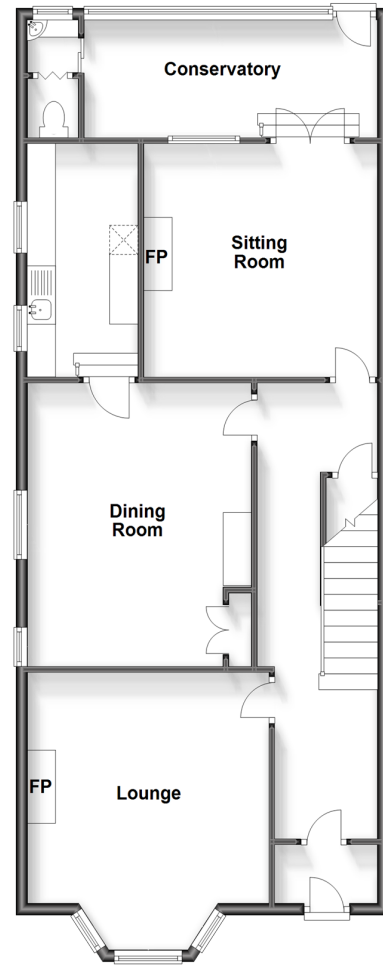
**OVER 60?**

Secure this property  
for up to **59% less!**

**Pittis**   
Helping you move forwards

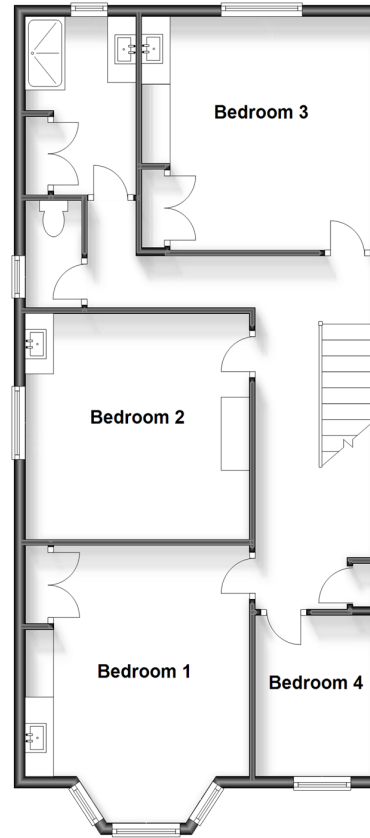
### Split Level Ground Floor

Approx. 94.7 sq. metres (1019.1 sq. feet)



### First Floor

Approx. 81.6 sq. metres (878.8 sq. feet)



## Accommodation

### GROUND FLOOR

Entrance Porch

Entrance Hall

Lounge: 15'0 x 14'0 (4.58m x 4.27m)

Dining Room: 13'6 x 13'0 (4.12m x 3.97m)

Kitchen: 13'0 x 6'4 (3.97m x 1.93m)

Sitting Room: 11'4 x 10'0 (3.46m x 3.05m)

Conservatory: 17'9 x 6'6 (5.41m x 1.98m)

Shower Room

### FIRST FLOOR

Bedroom 3: 13'0 x 11'0 (3.97m x 3.36m)

Bathroom

Bedroom 2: 13'0 x 12'6 (3.97m x 3.81m)

Bedroom 1: 15'3 x 13'0 (4.65m x 3.97m)

Bedroom 4: 9'0 x 7'0 (2.75m x 2.14m)

### OUTSIDE

Front Driveway

Rear Garden





## Main features

- Substantial semi-detached house with character features
- Perfect home for a family with many living options
- Driveway parking to front & beautiful good sized private garden to the rear
- Well presented throughout with high ceilings
- Located in a great spot close to the town, local pubs, restaurants and sandy beaches



### Nearest Schools

Primary Schools: Sandham Middle School 0.4 miles, Lake Middle School 1.2 miles, Forelands Middle School 3.7 miles

Secondary Schools: Sandown High School 0.5 miles,



### Transport Information

Train Stations: Sandown 0.4 miles, Lake 0.9 miles, Brading 1.6 miles



### Address

St. John's Road, Sandown, Isle of Wight, PO36



### Directions

For directions to this property please contact us.



