



OVER 60?

Secure this property
for up to **59% less!**

Price

£420,000

Leasehold

2x  2x  1x 

**Breakwaters,
Breakwater Way,
Sandown, Isle of Wight,
PO36**

Pittis 
Helping you move forwards



Main features

- Immaculately presented modern apartment with allocated parking
- Top floor with spectacular sea views
- Majority of NHBC guarantee remaining
- Large balcony offering a private outside space with far reaching views over the Culver Downs and the sea

Accommodation

FOURTH FLOOR

Hallway

Bedroom 2: 11'7 x 9'8 (3.53m x 2.95m)

Bedroom 1: 17'2 x 10'0 (5.24m x 3.05m)

En Suite Shower Room

Lounge/Kitchen/Dining Area: 24'2 x 23'3 (7.37m x 7.09m)

Bathroom

OUTSIDE

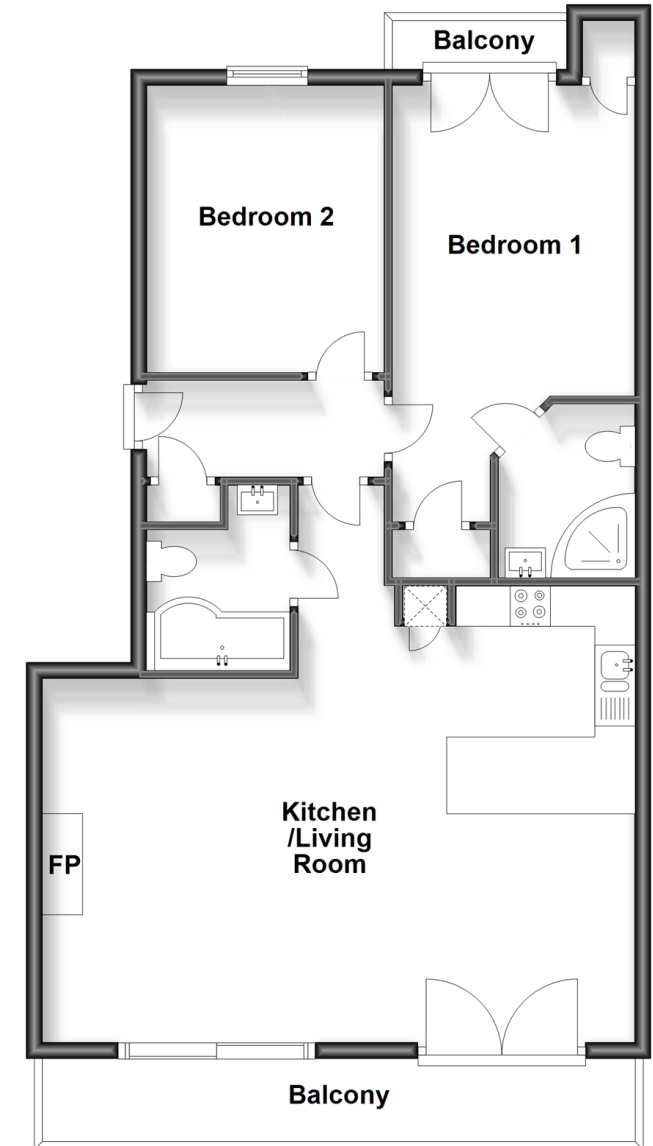
Allocated Underground Parking

Balcony 1

Balcony 2

Fourth Floor

Approx. 78.2 sq. metres (841.9 sq. feet)



Call Sandown - 01983 407444 ■ pittis.co.uk

- Legal advice should be taken to verify fixtures/fittings, planning, alterations and/or lease details
- Appliances & services are untested, dimensions are approximate and floor plans are not to scale
- Through a Homewise Home For Life Plan people aged 60+ can secure this property for up to 59% less, by purchasing a Lifetime Lease.



60520819/20240318/BB/NR