



Price
£250,000

Freehold

3x  1x  1x 

**Marlborough Road,
Elmfield, Ryde, Isle of
Wight, PO33**

OVER 60?

You could get up to
59% off the price!*



Video Tour available

Pittis 
Helping you move forwards



Main features

- A good size 2/3 bedroom semi detached house
- Off road parking and detached garage with power and inspection pit
- Great size garden to the side and rear with potential of extending subject to relevant planning permissions
- In need of some modernisation
- Available with no onward chain

Accommodation

GROUND FLOOR

Entrance Hall

Lounge: 12'1 x 12'0 (3.69m x 3.66m)

Dining Room: 12'2 x 11'1 (3.71m x 3.38m)

Kitchen: 15'8 x 7'6 (4.78m x 2.29m)

Shower Room

FIRST FLOOR

Landing

Bedroom 1: 12'11 x 12'0 (3.94m x 3.66m)

Bedroom 2: 12'0 x 11'0 (3.66m x 3.36m)

Dressing Room: 7'6 x 6'8 (2.29m x 2.03m)

Bathroom: 8'8 x 7'7 (2.64m x 2.31m)

OUTSIDE

Front Garden

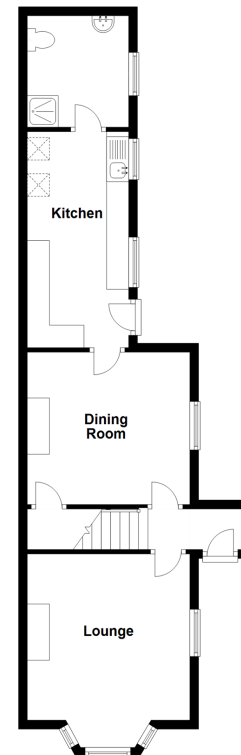
Off Road Parking

Garage

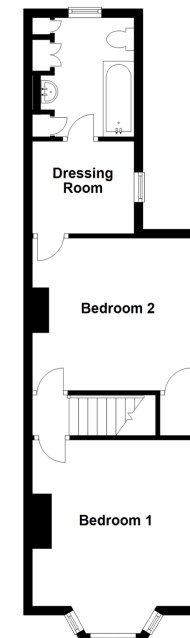
Rear Garden

Workshop: 30'0 x 8'0 (9.15m x 2.44m)

Ground Floor
Approx. 49.5 sq. metres (532.5 sq. feet)



First Floor
Approx. 42.4 sq. metres (456.1 sq. feet)



Call Ryde - 01983 564646 ■ pittis.co.uk

- Legal advice should be taken to verify fixtures/fittings, planning, alterations and/or lease details
- Our Homewise partnership offer a 'Home for Life' plan to buyers over 60, granting a lifetime lease for your protection and reducing the purchase price by up to 59%

- Appliances & services are untested, dimensions are approximate and floor plans are not to scale



60417235/20210724/HW/AG