



**Price**  
**£300,000**

**Freehold**

3x  1x  1x 

**St. Michael's Road, St.  
Helens, Ryde, Isle of  
Wight, PO33**

**OVER 60?**

Secure this property  
for up to **59% less!**

**Pittis**   
Helping you move forwards





## Main features

- Semi-detached house with ample parking space
- An ideal first purchase or family home
- Spacious lounge over looking the garden
- Close to village amenities and the beach
- Situated closeby to St Helens green

## Accommodation

### GROUND FLOOR

Entrance Hallway

Lounge: 18'4 x 12'8 (5.59m x 3.86m)

Kitchen / Diner: 15'6 x 9'3 (4.73m x 2.82m)

### FIRST FLOOR

Landing

Bedroom 1: 18'4 x 9'2 (5.59m x 2.80m)

Bedroom 2: 11'2 x 7'2 (3.41m x 2.19m)

Bedroom 3: 9'7 x 5'3 (2.92m x 1.60m)

Shower Room

### OUTSIDE

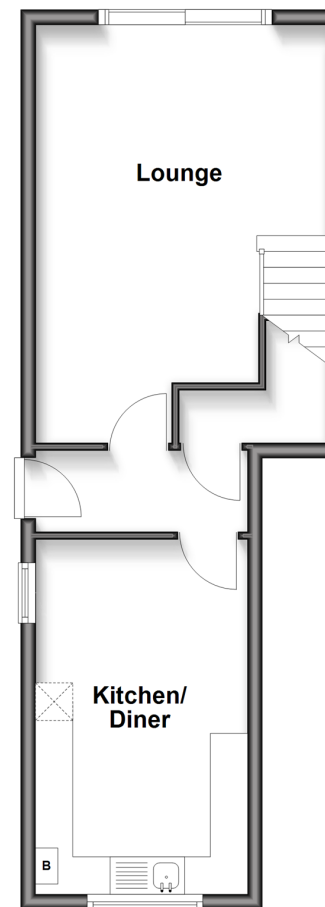
Off Road Parking

Rear Garden

Shed

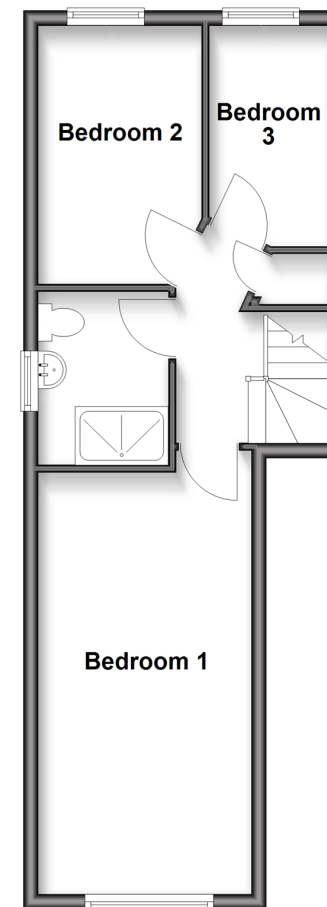
### Ground Floor

Approx. 39.0 sq. metres (419.4 sq. feet)



### First Floor

Approx. 39.0 sq. metres (420.2 sq. feet)



**Call Ryde - 01983 564646 ■ [pittis.co.uk](http://pittis.co.uk)**

- Legal advice should be taken to verify fixtures/fittings, planning, alterations and/or lease details
- Appliances & services are untested, dimensions are approximate and floor plans are not to scale
- Through a Homewise Home For Life Plan people aged 60+ can secure this property for up to 59% less, by purchasing a Lifetime Lease.



60426734/20250621/JH/JW