



Price
£425,000

Freehold

3x  1x  3x 

**Hutchinson Drive,
Pondwell, Ryde, Isle of
Wight, PO33**

OVER 60?

Secure this property
for up to **59% less!**

Pittis 
Helping you move forwards



Main features

- **Detached bungalow in peaceful cul-de-sac location**
- **Situated within walking distance to the Isle of Wight distillery**
- **Beautifully presented throughout**
- **Modern fitted kitchen and bathroom**
- **Low maintenance gardens to the front and rear**

Accommodation

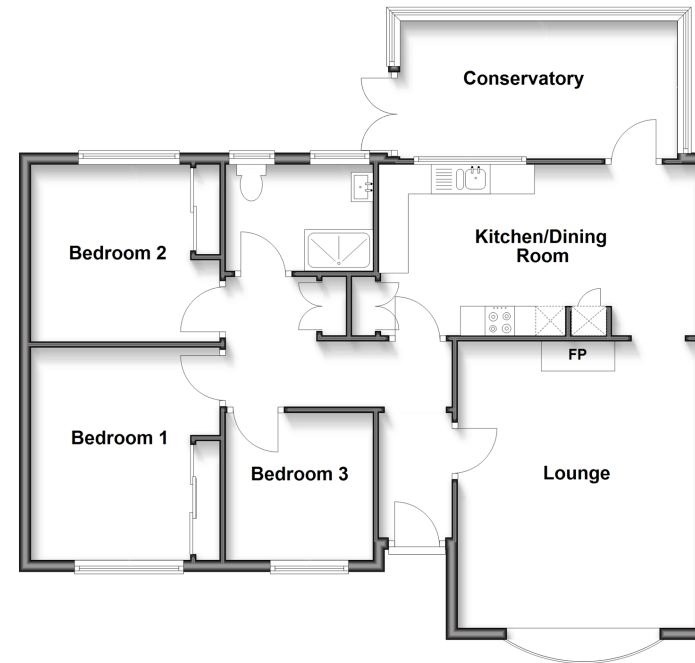
GROUND FLOOR

Entrance Hallway
 Lounge : 15'11 x 13'4 (4.85m x 4.07m)
 Kitchen/ Dining Room : 17'0 x 9'10 (5.19m x 3.00m)
 Conservatory : 17'4 x 8'10 (5.29m x 2.69m)
 Shower Room
 Bedroom 1 : 11'10 x 10'5 (3.61m x 3.18m)
 Bedroom 2 : 10'5 x 9'10 (3.18m x 3.00m)
 Bedroom 3 : 8'8 x 7'11 (2.64m x 2.41m)

OUTSIDE

Front Garden
 Rear Garden
 Off Road Parking
 Garage

Ground Floor
 Approx. 92.0 sq. metres (990.0 sq. feet)



Call Ryde - 01983 564646 ■ pittis.co.uk

■ Legal advice should be taken to verify fixtures/fittings, planning, alterations and/or lease details
 ■ Through a Homewise Home For Life Plan people aged 60+ can secure this property for up to 59% less, by purchasing a Lifetime Lease.

■ Appliances & services are untested, dimensions are approximate and floor plans are not to scale