



Price
£380,000

Freehold

3x  1x  1x 

**Well Street, Ryde, Isle
of Wight, PO33**

OVER 60?

Secure this property
for up to **59% less!**

Pittis 
Helping you move forwards



Main features

- Beautiful semi-detached house
- Set in a popular and convenient area of Ryde
- Perfect family home with large garden
- Abundance of modern and contemporary styles throughout
- Driveway to the front

Accommodation

GROUND FLOOR

Entrance Hallway
 Lounge : 14'11 x 12'2 (4.55m x 3.71m)
 Kitchen : 12'11 x 12'3 (3.94m x 3.74m)
 Dining/ Family Area: 17'4 x 13'5 (5.29m x 4.09m)
 Cloakroom

FIRST FLOOR

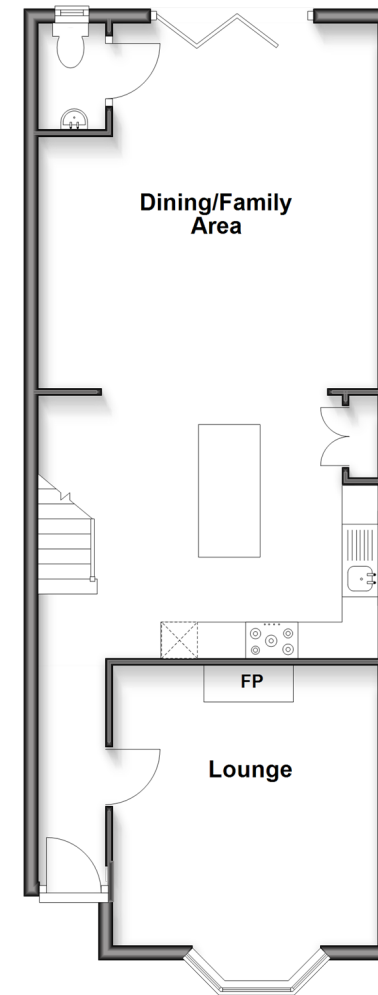
Landing
 Bedroom 1 : 15'7 x 14'6 (4.75m x 4.42m)
 Bedroom 2 : 12'0 x 10'2 (3.66m x 3.10m)
 Bedroom 3 : 10'2 x 9'2 (3.10m x 2.80m)
 Bathroom

OUTSIDE

Rear Garden
 Driveway

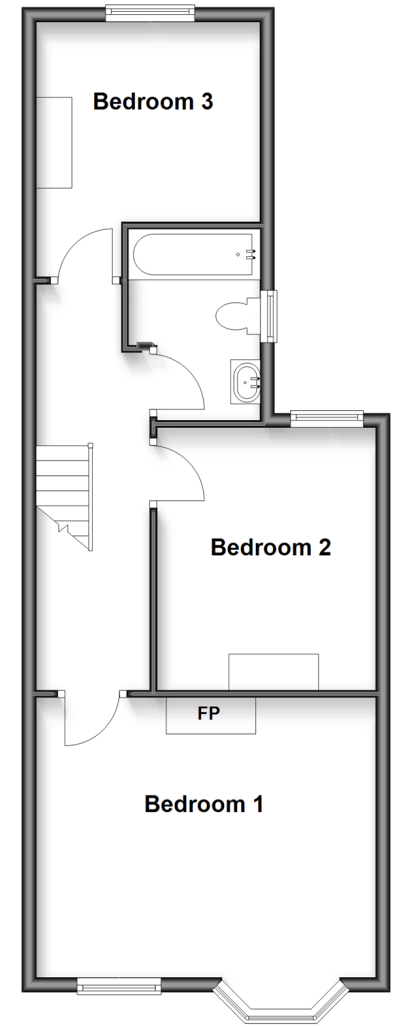
Ground Floor

Approx. 59.6 sq. metres (641.3 sq. feet)



First Floor

Approx. 53.6 sq. metres (577.0 sq. feet)



Call Ryde - 01983 564646 ■ pittis.co.uk

- Legal advice should be taken to verify fixtures/fittings, planning, alterations and/or lease details
- Appliances & services are untested, dimensions are approximate and floor plans are not to scale
- Through a Homewise Home For Life Plan people aged 60+ can secure this property for up to 59% less, by purchasing a Lifetime Lease.



60425372/20250523/JW/MG