



Price
£300,000

Leasehold

4x  2x  2x 

**Monkton Street, Ryde,
Isle of Wight, PO33**

OVER 60?

Secure this property
for up to **59% less!**

Pittis 
Helping you move forwards



Main features

- Large grade 2 listed semi detached house close to the beach
- Walking distance to Ryde town centre and local amenities
- Spacious rooms with character features throughout
- Private sunny courtyard and wrap around front gardens
- Ideal home to put your stamp on

Accommodation

GROUND FLOOR

Lounge: 19'1 x 11'4 (5.82m x 3.46m)
 Dining Room: 11'11 x 11'2 (3.63m x 3.41m)
 Kitchen: 10'11 x 10'4 (3.33m x 3.15m)
 Study: 10'3 x 9'8 (3.13m x 2.95m)
 Utility Room: 8'5 x 6'6 (2.57m x 1.98m)
 Shower Room

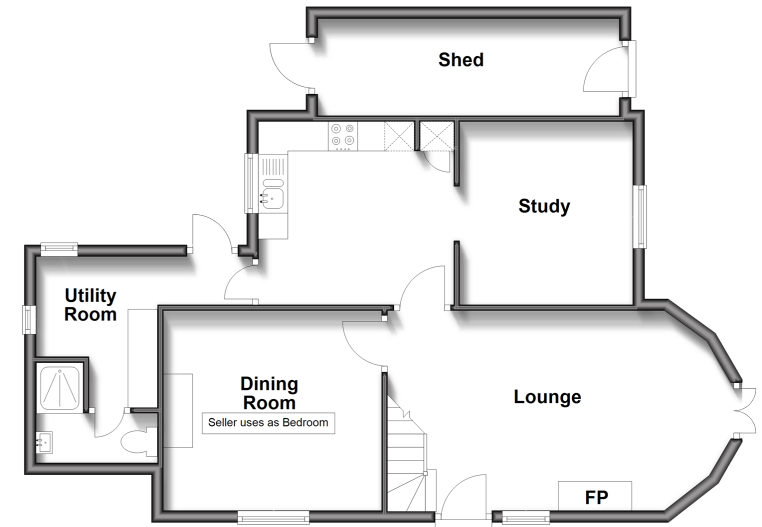
FIRST FLOOR

Landing
 Bedroom 1: 16'0 x 10'1 (4.88m x 3.08m)
 Bedroom 2: 15'8 x 7'4 (4.78m x 2.24m)
 Bedroom 3: 10'5 x 9'9 (3.18m x 2.97m)
 Bedroom 4: 11'5 x 11'3 (3.48m x 3.43m)
 Bathroom
 Cloakroom

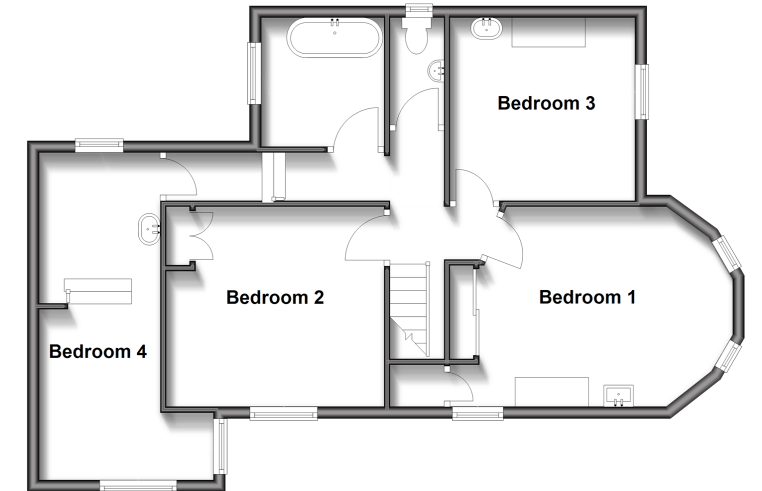
OUTSIDE

Front Garden
 Rear Garden
 Off Road Parking
 Shed

Ground Floor
 Approx. 61.3 sq. metres (660.1 sq. feet)



Split Level First Floor
 Approx. 66.8 sq. metres (718.9 sq. feet)



Call Ryde - 01983 564646 ■ pittis.co.uk

- Flying freehold affects part of this property, please contact us before proceeding
- If buying to let, the energy rating will need to be improved to at least 'E' rating before you can let the property
- Legal advice should be taken to verify fixtures/fittings, planning, alterations and/or lease details
- Appliances & services are untested, dimensions are approximate and floor plans are not to scale
- Through a Homewise Home For Life Plan people aged 60+ can secure this property for up to 59% less, by purchasing a Lifetime Lease.



60425877/20250424/JW/JW