



**OVER 60?**

Secure this property  
for up to **59% less!**

**Price**

**£240,000**

**Freehold**

2x  1x  1x 

**Kingslea Park, East  
Cowes, Isle of Wight,  
PO32**

**Pittis**   
Helping you move forwards





## Main features

- Modernised semi detached house with river views
- Dressing area to main bedroom
- Gated car port ideal for storing motorbikes
- Walking distance to the green perfect to take the dog or kids
- Close by to local amenities

## Accommodation

### GROUND FLOOR

Entrance Porch  
Hallway  
Cloakroom  
Lounge: 12'5 x 10'11 (3.79m x 3.33m)  
Kitchen / Dining Room: 17'2 x 9'5 (5.24m x 2.87m)  
Conservatory: 12'8 x 12'7 (3.86m x 3.84m)

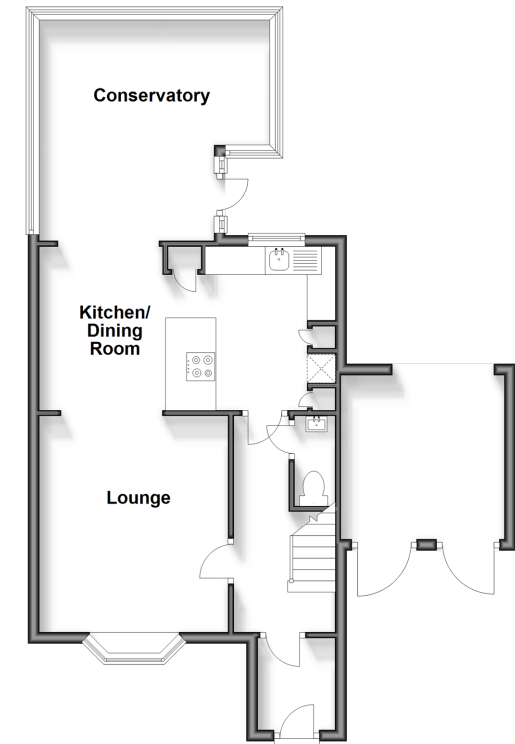
### FIRST FLOOR

Landing  
Bedroom 1: 11'1 x 8'9 (3.38m x 2.67m)  
Dressing Area: 8'2 x 7'9 (2.49m x 2.36m)  
Bedroom 2: 11'3 x 8'9 (3.43m x 2.67m)  
Bathroom

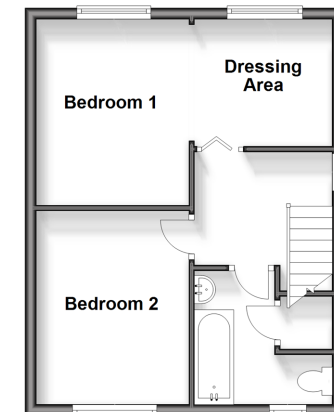
### OUTSIDE

Front Garden  
Driveway Parking  
Gated Carport  
Rear Garden

**Ground Floor**  
Approx. 53.0 sq. metres (570.8 sq. feet)



**First Floor**  
Approx. 35.9 sq. metres (386.1 sq. feet)



**Call Ryde - 01983 564646 ■ pittis.co.uk**

- Legal advice should be taken to verify fixtures/fittings, planning, alterations and/or lease details
- Appliances & services are untested, dimensions are approximate and floor plans are not to scale
- Through a Homewise Home For Life Plan people aged 60+ can secure this property for up to 59% less, by purchasing a Lifetime Lease.