



Price
£260,000

Freehold

3x  2x  1x 

**Lambert Lane, East
Cowes, Isle of Wight,
PO32**

OVER 60?

Secure this property
for up to **59% less!**

Pittis 
Helping you move forwards



Main features

- Immaculately presented end of terrace house
- Garage and off road parking
- Extended premium patio in garden with countryside views
- NHBC remainder until 2026
- En-suite as well as family bathroom

Accommodation

GROUND FLOOR

Hallway
Cloakroom
Lounge: 17'0 x 12'0 (5.19m x 3.66m)
Kitchen / Dining Room: 15'5 x 11'5 (4.70m x 3.48m)

FIRST FLOOR

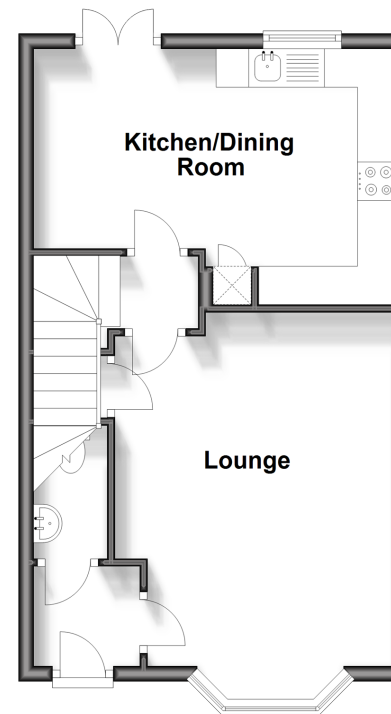
Landing
Bedroom 1: 11'0 x 10'5 (3.36m x 3.18m)
En-Suite Shower Room: 7'0 x 6'0 (2.14m x 1.83m)
Bedroom 2: 13'0 x 8'0 (3.97m x 2.44m)
Bedroom 3: 7'5 x 7'3 (2.26m x 2.21m)
Bathroom: 7'0 x 6'0 (2.14m x 1.83m)

OUTSIDE

Garage
Off Road Parking
Rear Garden

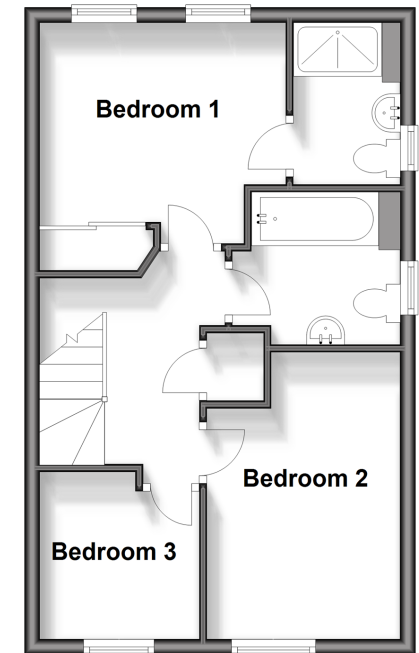
Ground Floor

Approx. 38.6 sq. metres (415.9 sq. feet)



First Floor

Approx. 38.4 sq. metres (413.3 sq. feet)



Call Ryde - 01983 564646 ■ pittis.co.uk

■ Legal advice should be taken to verify fixtures/fittings, planning, alterations and/or lease details
■ Through a Homewise Home For Life Plan people aged 60+ can secure this property for up to 59% less, by purchasing a Lifetime Lease.

■ Appliances & services are untested, dimensions are approximate and floor plans are not to scale



60426544/20241116/CP/JW