



**Price**  
**£240,000**

**Freehold**

2x  1x  2x 

**Osborne Road, Ryde,  
Isle of Wight, PO33**

**OVER 60?**

Secure this property  
for up to **59% less!**

**Pittis**   
Helping you move forwards





## Main features

- Attractive end of terrace house - ideal first time purchase
- Renovated from top to bottom and ready to move straight into
- Walking distance to shops and transport links
- Sunny low maintenance rear garden
- Spacious living accommodation spread over 3 floors

## Accommodation

### GROUND FLOOR

Hallway  
 Lounge: 11'5 x 11'5 (3.48m x 3.48m)  
 Bathroom: 10'0 x 7'0 (3.05m x 2.14m)

### LOWER GROUND FLOOR

Inner Hallway  
 Kitchen: 11'0 x 10'5 (3.36m x 3.18m)  
 Dining Room: 11'11 x 11'11 (3.63m x 3.63m)

### FIRST FLOOR

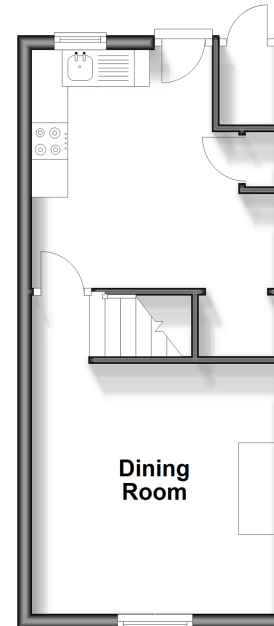
Landing  
 Bedroom 1: 11'7 x 11'5 (3.53m x 3.48m)  
 Bedroom 2: 11'11 x 11'5 (3.63m x 3.48m)

### OUTSIDE

Rear Garden

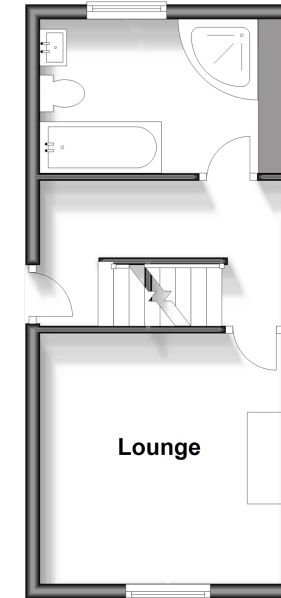
### Lower Ground Floor

Approx. 25.9 sq. metres (278.8 sq. feet)



### Ground Floor

Approx. 25.9 sq. metres (278.8 sq. feet)



### First Floor

Approx. 25.9 sq. metres (278.8 sq. feet)



Call Ryde - 01983 564646 ■ [pittis.co.uk](http://pittis.co.uk)

- Legal advice should be taken to verify fixtures/fittings, planning, alterations and/or lease details
- Through a Homewise Home For Life Plan people aged 60+ can secure this property for up to 59% less, by purchasing a Lifetime Lease.

- Appliances & services are untested, dimensions are approximate and floor plans are not to scale



60426461/20240905/JW/JW