



Price
£225,000

Freehold

2x  1x  2x 

**Surrey Street, Ryde, Isle
of Wight, PO33**

OVER 60?

Secure this property
for up to **59% less!**

Pittis 
Helping you move forwards



Main features

- Semi detached house with off road parking
- Older style property ready to put your own stamp on
- Set on the outskirts of Ryde
- Easy access to local amenities and mainland transport links
- Offered with vacant possession

Accommodation

GROUND FLOOR

- Entrance Porch
- Hallway
- Lounge: 12'8 x 11'6 (3.86m x 3.51m)
- Dining Area: 12'9 x 9'11 (3.89m x 3.02m)
- Kitchen: 9'1 x 6'6 (2.77m x 1.98m)
- Walk in Larder

FIRST FLOOR

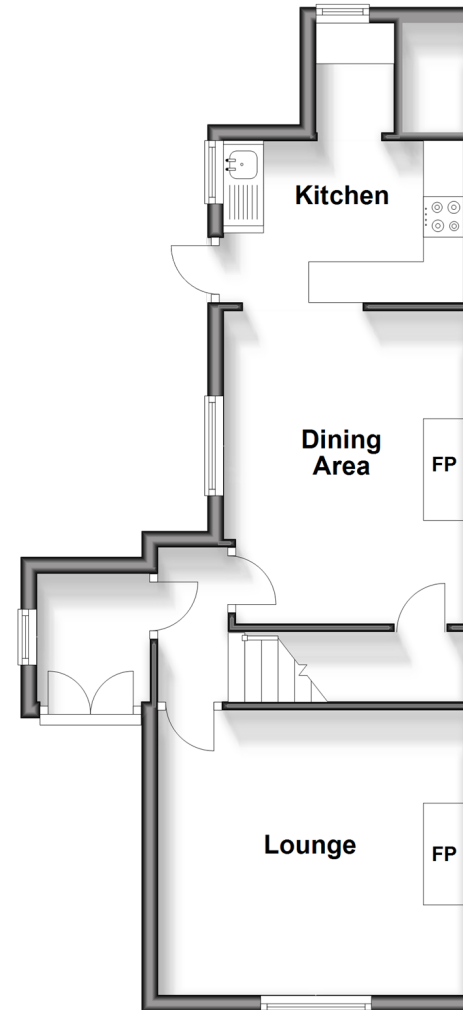
- Landing
- Bedroom 1: 12'8 x 11'11 (3.86m x 3.63m)
- Bedroom 2: 12'7 x 6'4 (3.84m x 1.93m)
- Bathroom: 9'9 x 6'7 (2.97m x 2.01m)

OUTSIDE

- Front Garden
- Off Road Parking
- Rear Garden
- Store Room / Toilet

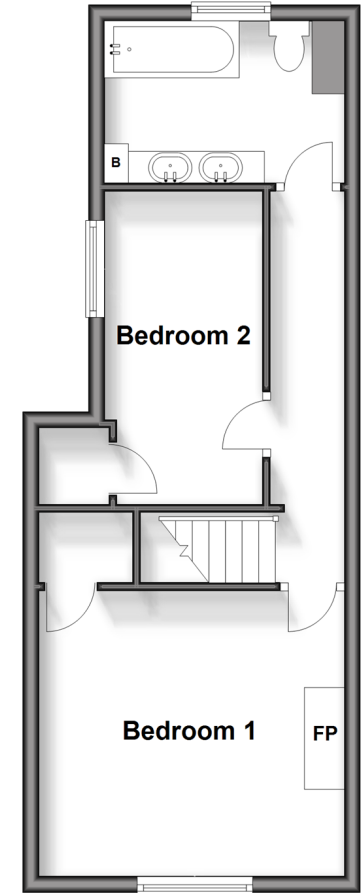
Ground Floor

Approx. 41.0 sq. metres (441.3 sq. feet)



First Floor

Approx. 36.0 sq. metres (387.1 sq. feet)



Call Ryde - 01983 564646 ■ pittis.co.uk

- Legal advice should be taken to verify fixtures/fittings, planning, alterations and/or lease details
- Appliances & services are untested, dimensions are approximate and floor plans are not to scale
- Through a Homewise Home For Life Plan people aged 60+ can secure this property for up to 59% less, by purchasing a Lifetime Lease.



60426334/20240906/JW/AG