



**OVER 60?**

Secure this property  
for up to **59% less!**

**Price**  
**£185,000**

**Leasehold**

2x  1x  1x 

**Ashey Road, Ryde, Isle  
of Wight, PO33**

**Pittis**   
Helping you move forwards



## Main features

- Semi detached character cottage
- Open plan kitchen / dining and living space
- Set on the outskirts of Ryde with a semi rural feel
- Easy access to mainland ferry links and amenities
- Mature front and rear gardens

## Accommodation

### GROUND FLOOR

Lounge / Dining Room: 19'2 x 12'4  
(5.85m x 3.76m)

Conservatory 1: 10'6 x 7'3 (3.20m x 2.21m)

Kitchen: 10'7 x 7'7 (3.23m x 2.31m)

Conservatory 2: 8'3 x 7'6 (2.52m x 2.29m)

### FIRST FLOOR

Landing

Bedroom 1: 13'3 x 10'3 (4.04m x 3.13m)

Bedroom 2: 8'6 x 6'5 (2.59m x 1.96m)

Bathroom: 6'8 x 5'0 (2.03m x 1.53m)

### OUTSIDE

Front Garden

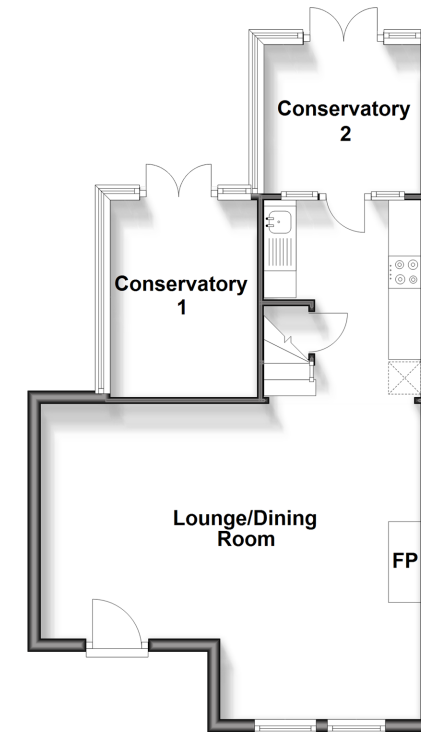
Driveway

Rear Garden

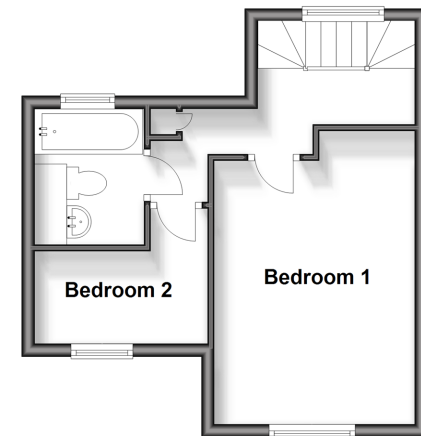
**Call Ryde - 01983 564646 ■ pittis.co.uk**

- Legal advice should be taken to verify fixtures/fittings, planning, alterations and/or lease details
- Appliances & services are untested, dimensions are approximate and floor plans are not to scale
- Through a Homewise Home For Life Plan people aged 60+ can secure this property for up to 59% less, by purchasing a Lifetime Lease.

**Ground Floor**  
Approx. 46.4 sq. metres (498.9 sq. feet)



**First Floor**  
Approx. 28.6 sq. metres (307.8 sq. feet)



60426430/20241022/MG/RC