



Price
£325,000

Freehold

2x  1x  2x 

**Packsfield Lane,
Wootton Bridge, Ryde,
Isle of Wight, PO33**

OVER 60?

Secure this property
for up to **59% less!**

Pittis 
Helping you move forwards



Main features

- Detached bungalow situated in a peaceful and quiet lane
- Large tranquil rear garden to enjoy in the summer months
- The ideal home to move straight into and relax
- Abundance of country walks on the door step and the steam railway
- Walking distance to amenities

Accommodation

GROUND FLOOR

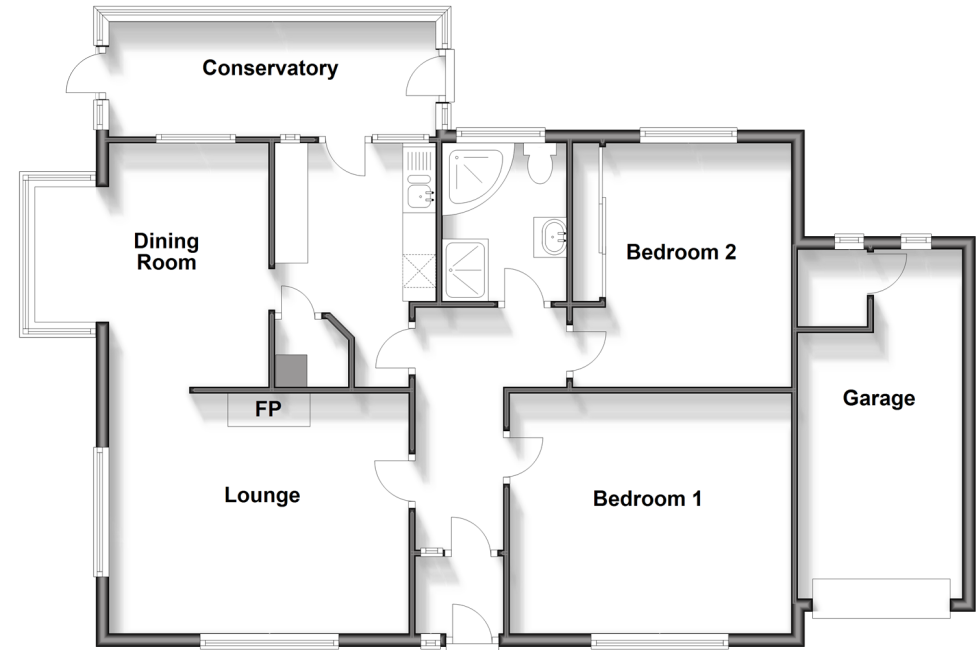
Entrance Porch
Hallway
Lounge: 14'10 x 11'11 (4.52m x 3.63m)
Dining Room: 12'7 x 11'3 (3.84m x 3.43m)
Kitchen: 12'3 x 8'4 (3.74m x 2.54m)
Conservatory
Bathroom
Bedroom 1: 13'8 x 12'1 (4.17m x 3.69m)
Bedroom 2: 12'3 x 10'8 (3.74m x 3.25m)

OUTSIDE

Front Garden
Driveway Parking
Garage
Rear Garden

Ground Floor

Approx. 101.3 sq. metres (1090.8 sq. feet)



Call Ryde - 01983 564646 ■ pittis.co.uk

■ Legal advice should be taken to verify fixtures/fittings, planning, alterations and/or lease details
■ Through a Homewise Home For Life Plan people aged 60+ can secure this property for up to 59% less, by purchasing a Lifetime Lease.

■ Appliances & services are untested, dimensions are approximate and floor plans are not to scale