



Price
£375,000

Freehold

2x  1x  2x 

**Oaklands Close,
Fishbourne, Isle of
Wight, PO33**

OVER 60?

Secure this property
for up to **59% less!**

Pittis 
Helping you move forwards



Main features

- Charming detached bungalow
- Modern interior throughout the open plan living accommodation
- Enclosed rear garden with a self contained external office
- Popular location close to mainland ferry links
- Ideal home to move straight in and enjoy

Accommodation

GROUND FLOOR

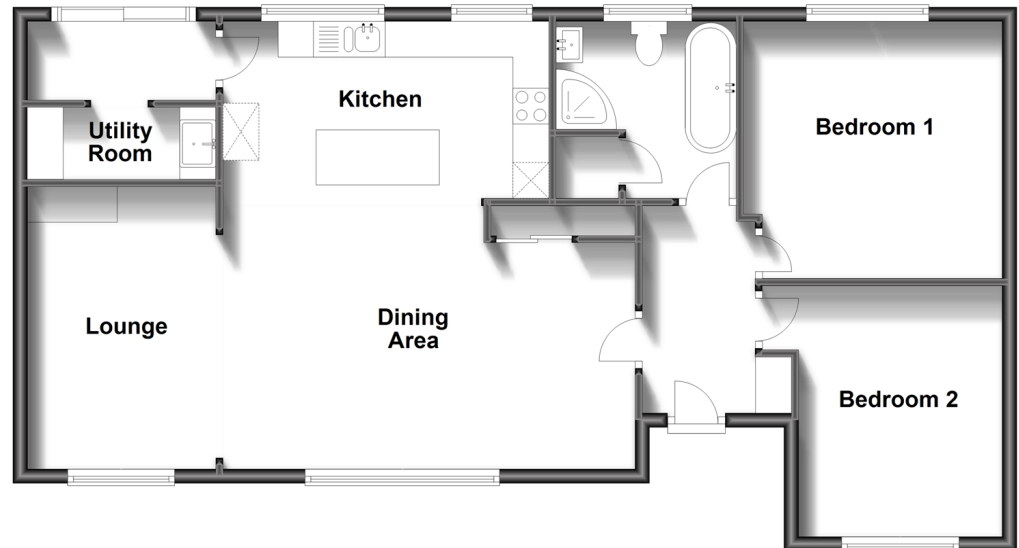
- Entrance Hallway
- Dining Area: 18'9 x 10'3 (5.72m x 3.13m)
- Lounge: 12'3 x 8'5 (3.74m x 2.57m)
- Kitchen: 14'8 x 9'9 (4.47m x 2.97m)
- Utility room
- Bathroom: 8'2 x 8'0 (2.49m x 2.44m)
- Bedroom 1: 11'7 x 11'7 (3.53m x 3.53m)
- Bedroom 2: 11'2 x 9'2 (3.41m x 2.80m)

OUTSIDE

- Off-Road Parking
- Gardens
- Garden Office

Ground Floor

Approx. 85.7 sq. metres (922.9 sq. feet)



Call Ryde - 01983 564646 ■ pittis.co.uk

- The seller is a person connected with Pittis as defined in the Estate Agents Act 1979
- Appliances & services are untested, dimensions are approximate and floor plans are not to scale

- Legal advice should be taken to verify fixtures/fittings, planning, alterations and/or lease details
- Through a Homewise Home For Life Plan people aged 60+ can secure this property for up to 59% less, by purchasing a Lifetime Lease.



60425785/20240129/JW/LW