



**Price**  
**£275,000**

**Leasehold**

3x  1x  1x 

**St. John's Road, Ryde,  
Isle of Wight, PO33**

**OVER 60?**

Secure this property  
for up to **59% less!**

**Pittis**   
Helping you move forwards





## Main features

- Attractive detached house with vacant possession
- Modern lounge/dining room
- Located on the edge of town accessible to local amenities and transport links
- Spacious accommodation and must be viewed
- Good size garden to rear

## Accommodation

### GROUND FLOOR

Hallway

Lounge/ Dining Room: 24'6 x 12'5 (7.47m x 3.79m)

Kitchen : 11'11 x 11'10 (3.63m x 3.61m)

Separate Toilet: 6'6 x 3'0 (1.98m x 0.92m)

Conservatory : 11'11 x 11'11 (3.63m x 3.63m)

### FIRST FLOOR

Landing

Bedroom 1: 12'1 x 8'4 (3.69m x 2.54m)

Bedroom 2 : 12'3 x 12'0 (3.74m x 3.66m)

Bedroom 3 : 7'6 x 5'8 (2.29m x 1.73m)

Bathroom: 8'10 x 6'10 (2.69m x 2.08m)

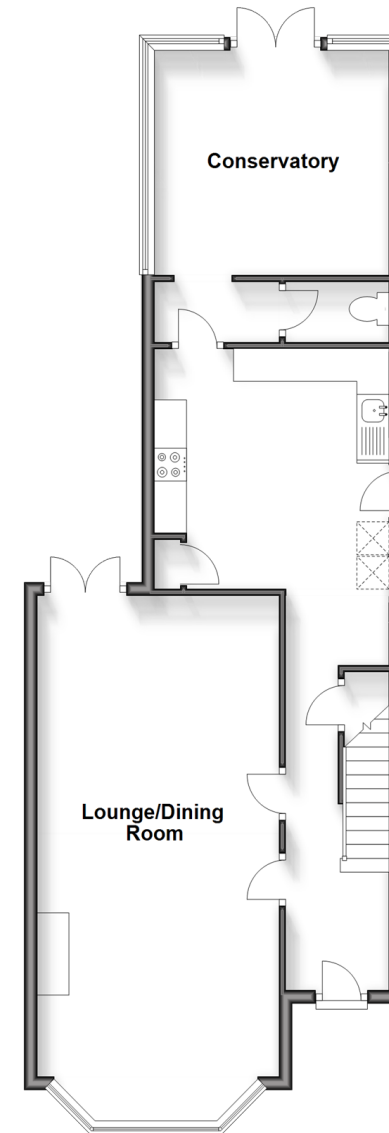
### OUTSIDE

Front Garden

Rear Garden

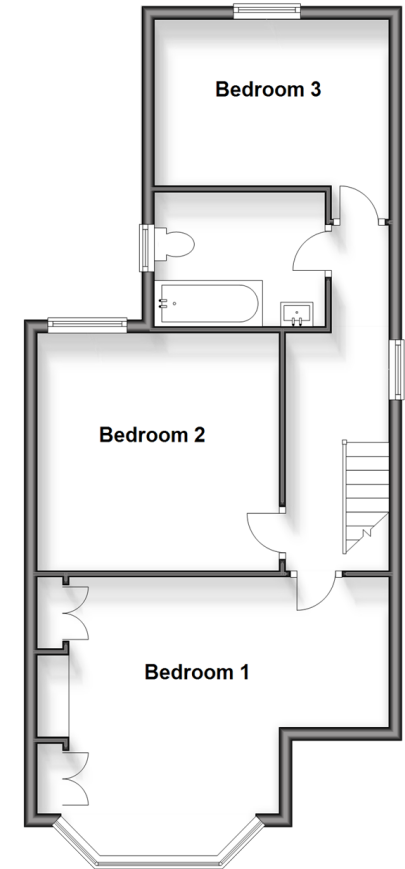
### Ground Floor

Approx. 68.7 sq. metres (739.8 sq. feet)



### First Floor

Approx. 55.9 sq. metres (601.3 sq. feet)



**Call Ryde - 01983 564646 ■ pittis.co.uk**

- Legal advice should be taken to verify fixtures/fittings, planning, alterations and/or lease details
- Appliances & services are untested, dimensions are approximate and floor plans are not to scale
- Through a Homewise Home For Life Plan people aged 60+ can secure this property for up to 59% less, by purchasing a Lifetime Lease.



60426369/20240521/DN/AGAN