



Price
£205,000

Freehold

2x  1x  1x 

**Mount Street, Ryde, Isle
of Wight, PO33**

OVER 60?

Secure this property
for up to **59% less!**

Pittis 
Helping you move forwards



Main features

- Beautifully presented semi detached cottage close to town
- Sunny rear garden to enjoy in the summer months
- Walking distance to shops and transport links
- Open plan living for entertaining family and friends
- Cottage features throughout

Accommodation

GROUND FLOOR

Porch

Lounge : 10'11 x 10'2 (3.33m x 3.10m)

Dining Area : 10'11 x 8'0 (3.33m x 2.44m)

Kitchen: 8'8 x 8'2 (2.64m x 2.49m)

SPLIT LEVEL FIRST FLOOR

Landing

Bedroom 1: 13'10 x 11'10 (4.22m x 3.61m)

Bedroom 2: 8'9 x 7'10 (2.67m x 2.39m)

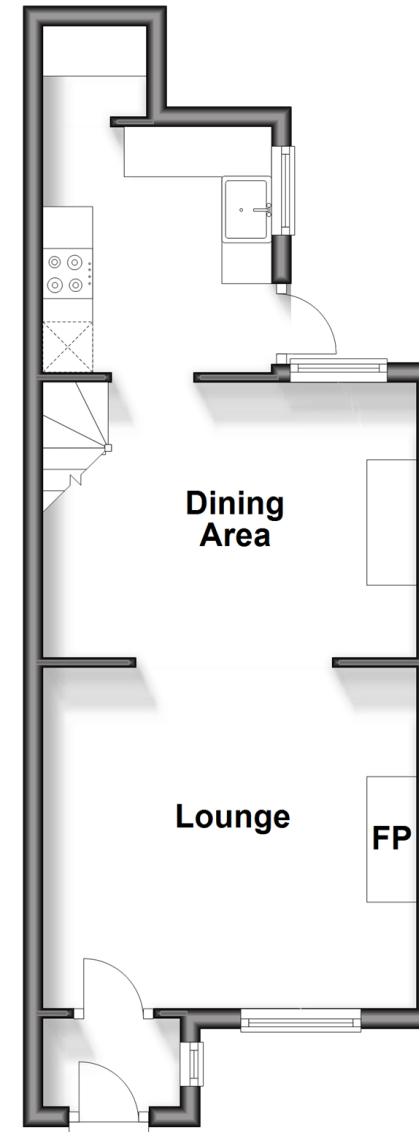
Bathroom

OUTSIDE

Rear Garden

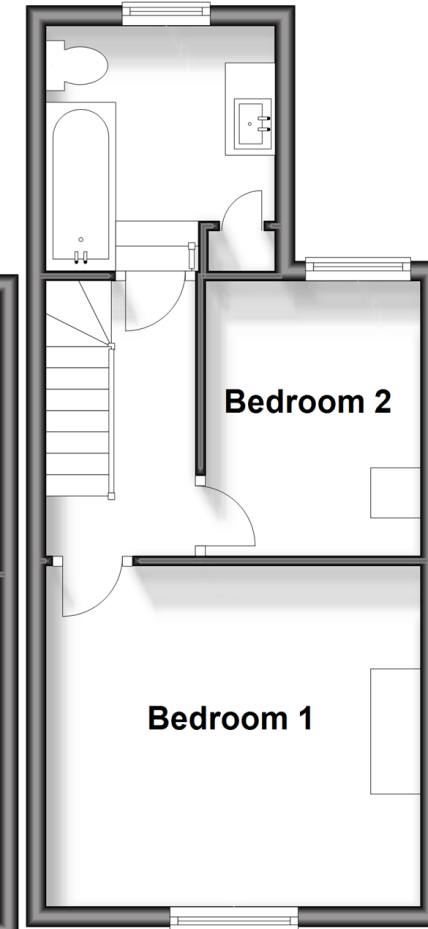
Ground Floor

Approx. 31.7 sq. metres (341.4 sq. feet)



Split Level First Floor

Approx. 29.3 sq. metres (315.7 sq. feet)



Call Ryde - 01983 564646 ■ pittis.co.uk

- Legal advice should be taken to verify fixtures/fittings, planning, alterations and/or lease details
- Appliances & services are untested, dimensions are approximate and floor plans are not to scale
- Through a Homewise Home For Life Plan people aged 60+ can secure this property for up to 59% less, by purchasing a Lifetime Lease.



60426347/20240805/RC/JW