



Price
£335,000

Freehold

4x  2x  2x 

**Gordon Close, Ryde, Isle
of Wight, PO33**

OVER 60?

Secure this property
for up to **59% less!**

Pittis 
Helping you move forwards



Main features

- Deceptively spacious end of terrace house
- Offered with vacant possession
- Good size accommodation which could be split for separate living
- Set on a corner plot with good size gardens and a garage

Accommodation

GROUND FLOOR

- Entrance Hallway
- Lounge: 14'7 x 13'10 (4.45m x 4.22m)
- Kitchen: 18'0 x 9'5 (5.49m x 2.87m)
- Dining Area: 21'2 x 10'0 (6.46m x 3.05m)

FIRST FLOOR

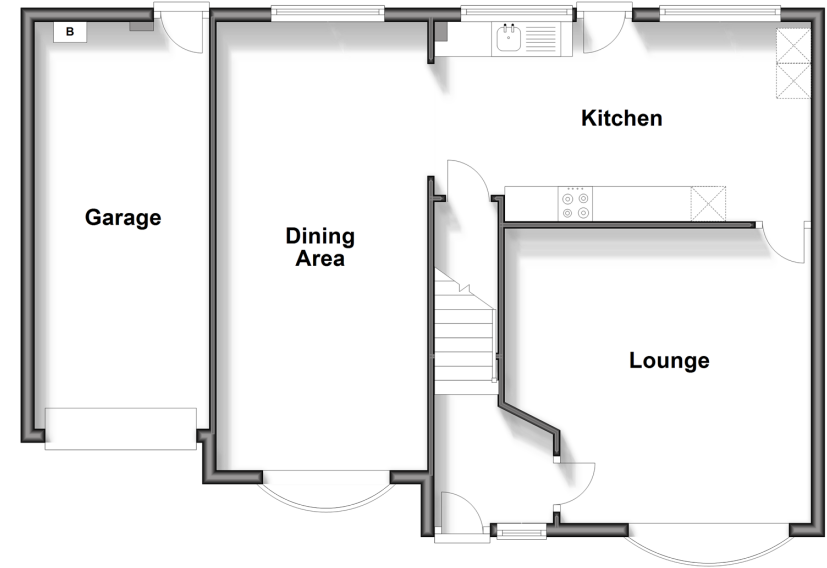
- Landing
- Bedroom 1: 13'10 x 9'10 (4.22m x 3.00m)
- En-Suite Bathroom: 10'0 x 4'10 (3.05m x 1.47m)
- Bedroom 2: 12'1 x 8'10 (3.69m x 2.69m)
- Bedroom 3: 11'8 x 8'1 (3.56m x 2.47m)
- Bedroom 4: 8'11 x 8'11 (2.72m x 2.72m)
- Shower Room: 8'8 x 5'6 (2.64m x 1.68m)

OUTSIDE

- Front Garden
- Driveway Parking
- Garage: 19'3 x 8'3 (5.87m x 2.52m)
- Rear Garden

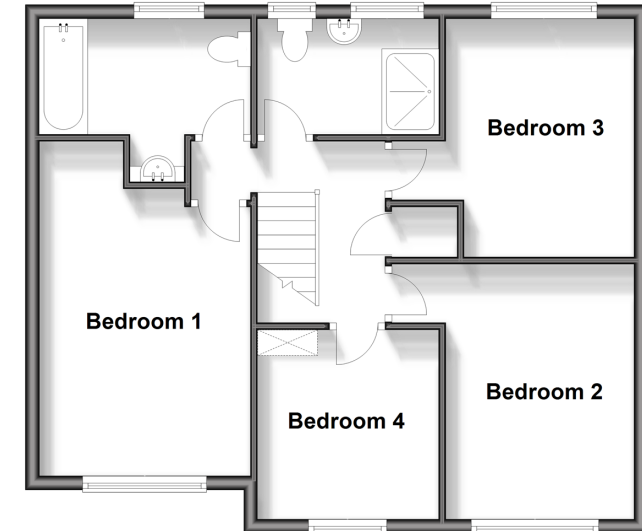
Ground Floor

Approx. 75.4 sq. metres (812.0 sq. feet)



First Floor

Approx. 59.9 sq. metres (645.1 sq. feet)



Call Ryde - 01983 564646 ■ pittis.co.uk

- Legal advice should be taken to verify fixtures/fittings, planning, alterations and/or lease details
- Appliances & services are untested, dimensions are approximate and floor plans are not to scale
- Through a Homewise Home For Life Plan people aged 60+ can secure this property for up to 59% less, by purchasing a Lifetime Lease.



60426353/20240426/DN/AGAN