



Price
£200,000

Leasehold

3x  1x  2x 

**Daniel Street, Ryde, Isle
of Wight, PO33**

OVER 60?

Secure this property
for up to **59% less!**

Pittis 
Helping you move forwards



Main features

- Ideal semi detached house for your first purchase
- Walking distance to the town centre and transport links
- Sunny courtyard garden to relax and enjoy in the summer months
- Perfect family home with primary schools on your doorstep
- Cosy living space with log burner

Accommodation

GROUND FLOOR

Hallway

Lounge: 11'9 x 11'4 (3.58m x 3.46m)

Dining Room: 11'8 x 11'5 (3.56m x 3.48m)

Kitchen: 11'2 x 6'11 (3.41m x 2.11m)

Separate Toilet

Bathroom

FIRST FLOOR

Landing

Bedroom 1: 11'9 x 11'5 (3.58m x 3.48m)

Bedroom 2: 11'8 x 11'5 (3.56m x 3.48m)

Bedroom 3: 11'2 x 6'11 (3.41m x 2.11m)

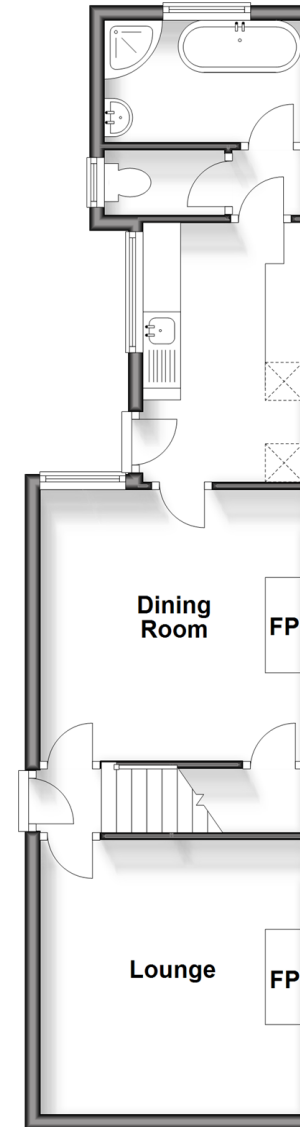
OUTSIDE

Front Garden

Rear Courtyard Garden

Ground Floor

Approx. 43.1 sq. metres (464.2 sq. feet)



First Floor

Approx. 36.2 sq. metres (389.2 sq. feet)



Call Ryde - 01983 564646 ■ pittis.co.uk

- Legal advice should be taken to verify fixtures/fittings, planning, alterations and/or lease details
- Appliances & services are untested, dimensions are approximate and floor plans are not to scale
- Through a Homewise Home For Life Plan people aged 60+ can secure this property for up to 59% less, by purchasing a Lifetime Lease.



60426163/20240409/DN/JW