



**Price**  
**£425,000**

**Freehold**

3x  1x  1x 

**Marina Avenue, Appley,  
Ryde, Isle of Wight,  
PO33**

**OVER 60?**

Secure this property  
for up to **59% less!**

**Pittis**   
Helping you move forwards



## Main features

- Beautifully presented detached bungalow, minutes walk to the beach
- Mature rear garden with complete privacy
- Large lounge with french doors to garden
- Perfect to move straight into and enjoy the tranquil location
- Near to local bus routes

## Accommodation

### GROUND FLOOR

Entrance Porch

Hallway

Bedroom 3 / Dining Room : 6'8 x 5'1 (2.03m x 1.55m)

Bathroom

Kitchen: 11'2 x 8'5 (3.41m x 2.57m)

Lounge: 19'0 x 10'9 (5.80m x 3.28m)

Bedroom 1: 11'8 x 10'10 (3.56m x 3.30m)

Bedroom 2: 11'0 x 9'5 (3.36m x 2.87m)

### OUTSIDE

Front Garden

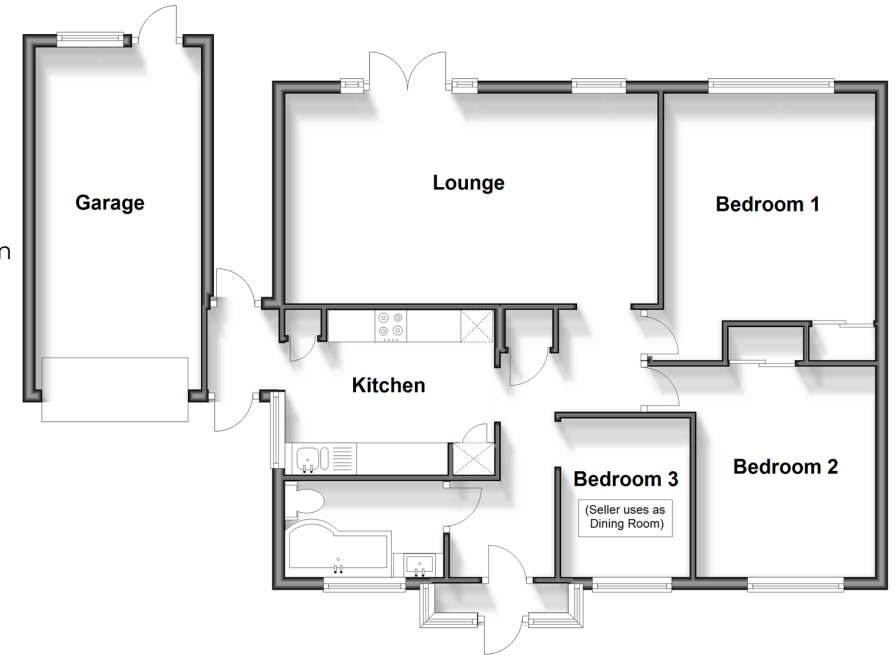
Rear Garden

Garage

Off Road Parking

### Ground Floor

Approx. 87.3 sq. metres (939.9 sq. feet)



Call Ryde - 01983 564646 ■ [pittis.co.uk](http://pittis.co.uk)

- Legal advice should be taken to verify fixtures/fittings, planning, alterations and/or lease details
- Appliances & services are untested, dimensions are approximate and floor plans are not to scale
- Through a Homewise Home For Life Plan people aged 60+ can secure this property for up to 59% less, by purchasing a Lifetime Lease.



60425693 / 20240405/DN/JW