



Price
£375,000

Freehold

3x  2x  1x 

Hayward Avenue, Ryde,
Isle of Wight, PO33

OVER 60?

Secure this property
for up to **59% less!**

Pittis 
Helping you move forwards



Main features

- Surprisingly spacious detached bungalow
- Driveway parking for several cars
- Very well presented with that ready to move into feel
- Edge of town location close to local shops and transport links
- En-suite facilities to main bedroom

Accommodation

GROUND FLOOR

Office: 10'6 x 9'4 (3.20m x 2.85m)

Inner Hallway

Shower Room: 7'6 x 7'3 (2.29m x 2.21m)

Bedroom 1: 13'11 x 11'10 (4.24m x 3.61m)

En-Suite

Bedroom 2: 12'2 x 11'11 (3.71m x 3.63m)

Bedroom 3: 11'11 x 11'11 (3.63m x 3.63m)

Lounge / Dining Room: 25'0 x 11'10 (7.63m x 3.61m)

Kitchen: 15'5 x 9'0 (4.70m x 2.75m)

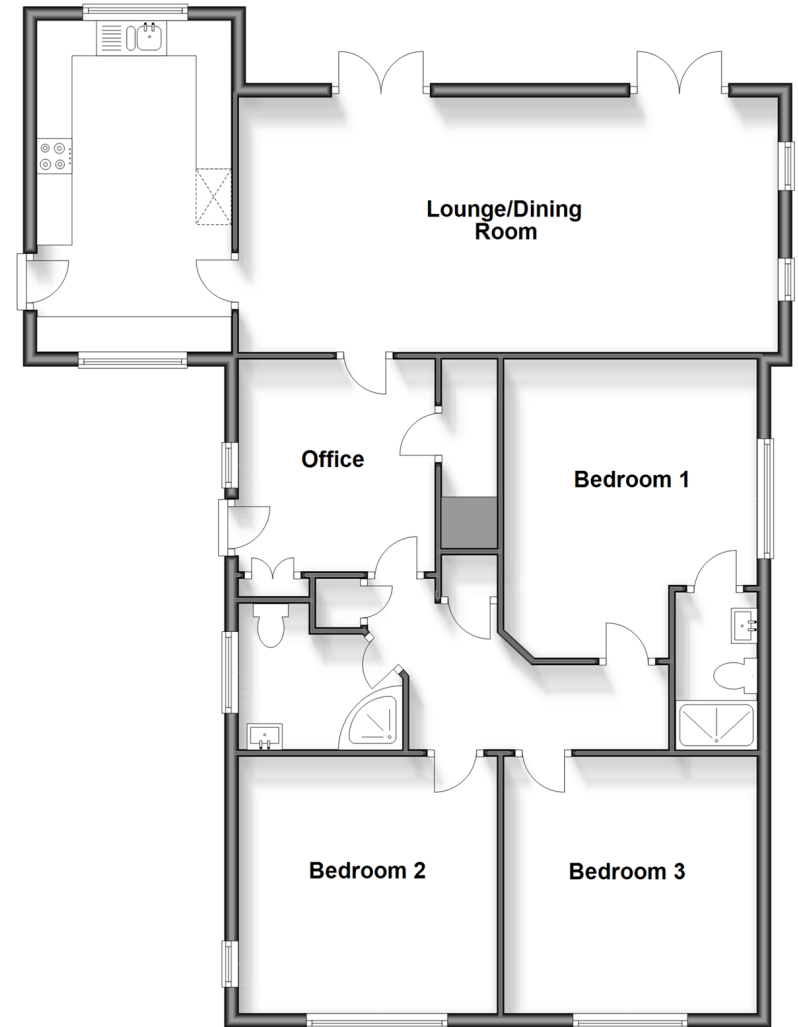
OUTSIDE

Front Garden

Driveway

Rear Garden

Ground Floor
Approx. 110.4 sq. metres (1188.0 sq. feet)



Call Ryde - 01983 564646 ■ pittis.co.uk

- Legal advice should be taken to verify fixtures/fittings, planning, alterations and/or lease details
- Appliances & services are untested, dimensions are approximate and floor plans are not to scale
- Through a Homewise Home For Life Plan people aged 60+ can secure this property for up to 59% less, by purchasing a Lifetime Lease.



60426294/20240201/DN/AGAN