



Price
£325,000

Leasehold

3x  2x  2x 

**Somerset Road, Ryde,
Isle of Wight, PO33**

OVER 60?

Secure this property
for up to **59% less!**

Pittis 
Helping you move forwards



Main features

- **Stunning extended semi detached family home**
- **Large lawned garden with spacious outbuilding**
- **Driveway parking for 2 vehicles**
- **Ideally located for primary schools & local shops making it perfect for families**

Accommodation

GROUND FLOOR

Hallway

Lounge: 14'0 x 12'2 (4.27m x 3.71m)

Dining Room: 12'3 x 10'10 (3.74m x 3.30m)

Kitchen/Breakfast Room: 14'7 x 11'8 (4.45m x 3.56m)

Bathroom: 11'9 x 7'3 (3.58m x 2.21m)

FIRST FLOOR

Landing

Bedroom 1: 12'1 x 11'1 (3.69m x 3.38m)

En Suite Shower Room: 6'6 x 6'5 (1.98m x 1.96m)

Bedroom 2: 12'2 x 10'10 (3.71m x 3.30m)

Bedroom 3: 11'1 x 7'3 (3.38m x 2.21m)

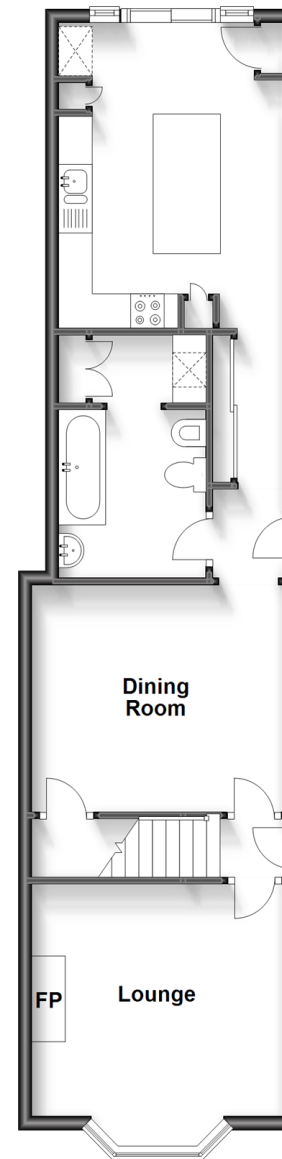
OUTSIDE

Driveway

Front & Rear Gardens

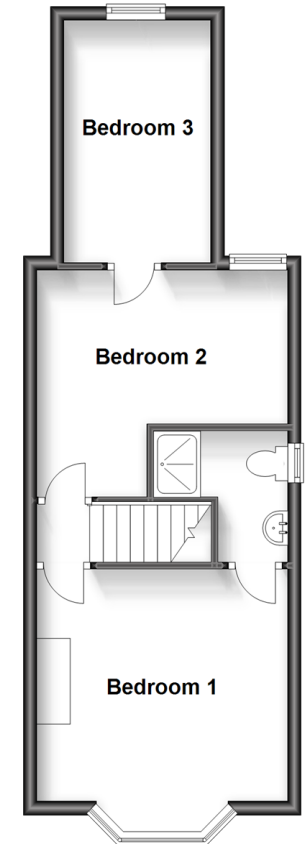
Ground Floor

Approx. 56.8 sq. metres (611.0 sq. feet)



First Floor

Approx. 37.3 sq. metres (401.9 sq. feet)



Call Ryde - 01983 564646 ■ pittis.co.uk

- Legal advice should be taken to verify fixtures/fittings, planning, alterations and/or lease details
- Appliances & services are untested, dimensions are approximate and floor plans are not to scale
- Through a Homewise Home For Life Plan people aged 60+ can secure this property for up to 59% less, by purchasing a Lifetime Lease.



60424902/20231017/KB/LW