



Price
£205,000

Freehold

2x  1x  1x 

**Wintergreen Gardens,
Newport, Isle of Wight,
PO30**

OVER 60?

Secure this property
for up to **59% less!**

Pittis 
Helping you move forwards



Main features

- Modern end of terrace house in a cul-de-sac location
- Ready to move into with vacant possession
- Open plan kitchen/dining room
- Enclosed lawned rear garden and allocated parking
- Popular area and ideal first time home or buy to let

Accommodation

GROUND FLOOR

Entrance Hallway

Lounge: 12'11 x 12'0 (3.94m x 3.66m)

Kitchen/Dining Room : 12'11 x 7'7 (3.94m x 2.31m)

Cloakroom

FIRST FLOOR

Landing

Bedroom 1: 12'0 x 9'6 (3.66m x 2.90m)

Bedroom 2: 12'11 x 7'6 (3.94m x 2.29m)

Bathroom

OUTSIDE

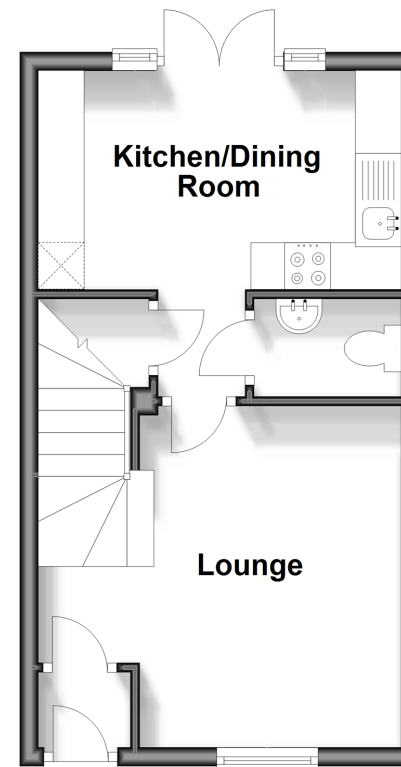
Front Garden

Allocated Parking

Rear Garden

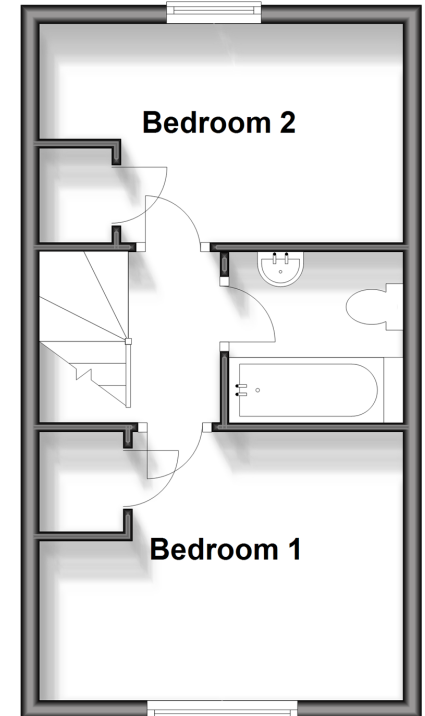
Ground Floor

Approx. 28.7 sq. metres (308.8 sq. feet)



First Floor

Approx. 28.7 sq. metres (308.8 sq. feet)



Call Newport - 01983 528888 ■ pittis.co.uk

- Legal advice should be taken to verify fixtures/fittings, planning, alterations and/or lease details
- Appliances & services are untested, dimensions are approximate and floor plans are not to scale
- Through a Homewise Home For Life Plan people aged 60+ can secure this property for up to 59% less, by purchasing a Lifetime Lease.



60323283/20250227/SC/NH