



**Price**  
**£210,000**

**Freehold**

2x  1x  1x 

**Wintergreen Gardens,  
Newport, Isle of Wight,  
PO30**

**OVER 60?**

Secure this property  
for up to **59% less!**

**Pittis**   
Helping you move forwards



## Main features

- Modern end of terrace house in a cul-de-sac location
- Ready to move into with vacant possession
- Open plan kitchen/dining room
- Enclosed lawned rear garden and allocated parking
- Popular area and ideal first time home or buy to let

## Accommodation

### GROUND FLOOR

Entrance Hallway  
 Lounge: 12'11 x 12'0 (3.94m x 3.66m)  
 Kitchen/Dining Room : 12'11 x 7'7 (3.94m x 2.31m)  
 Cloakroom

### FIRST FLOOR

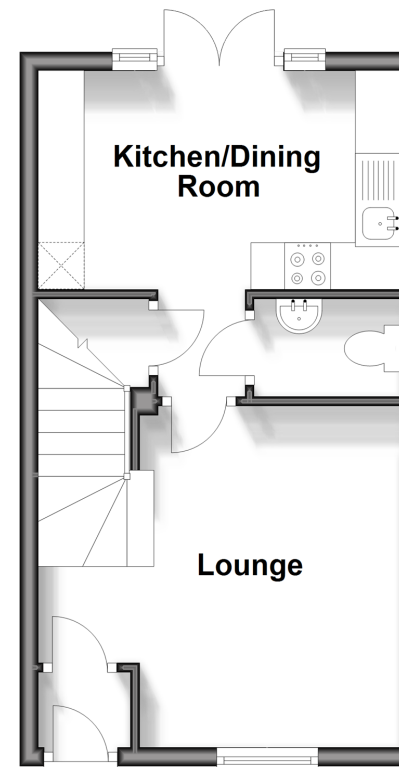
Landing  
 Bedroom 1: 12'0 x 9'6 (3.66m x 2.90m)  
 Bedroom 2: 12'11 x 7'6 (3.94m x 2.29m)  
 Bathroom

### OUTSIDE

Front Garden  
 Allocated Parking  
 Rear Garden

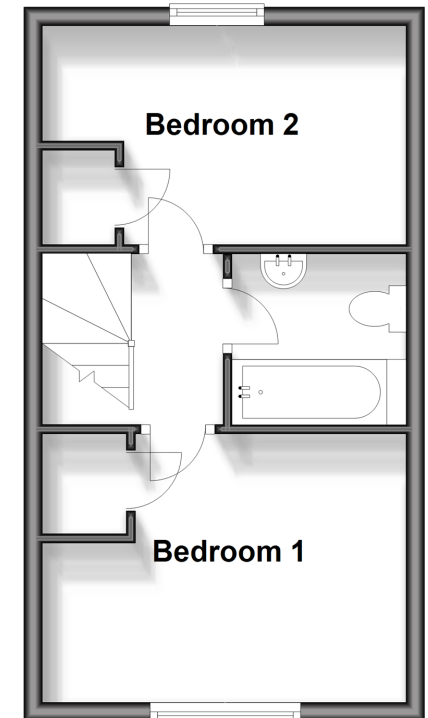
### Ground Floor

Approx. 28.7 sq. metres (308.8 sq. feet)



### First Floor

Approx. 28.7 sq. metres (308.8 sq. feet)



**Call Newport - 01983 528888 ■ pittis.co.uk**

- Legal advice should be taken to verify fixtures/fittings, planning, alterations and/or lease details
- Appliances & services are untested, dimensions are approximate and floor plans are not to scale
- Through a Homewise Home For Life Plan people aged 60+ can secure this property for up to 59% less, by purchasing a Lifetime Lease.



60323283/20241029/RC/NH