



Price
£385,000

Freehold

3x  2x  2x 

**"Tanglewood",
Orchards Way, Shorwell,
Newport, Isle of Wight,
PO30**

OVER 60?

Secure this property
for up to **59% less!**

Pittis 
Helping you move forwards



Main features

- Deceptively spacious detached bungalow
- Beautiful gardens that surround the property
- Open plan kitchen / dining area - perfect for entertaining
- Internal access to the large garage / utility storage
- Cul-de-sac location in a popular rural village

Accommodation

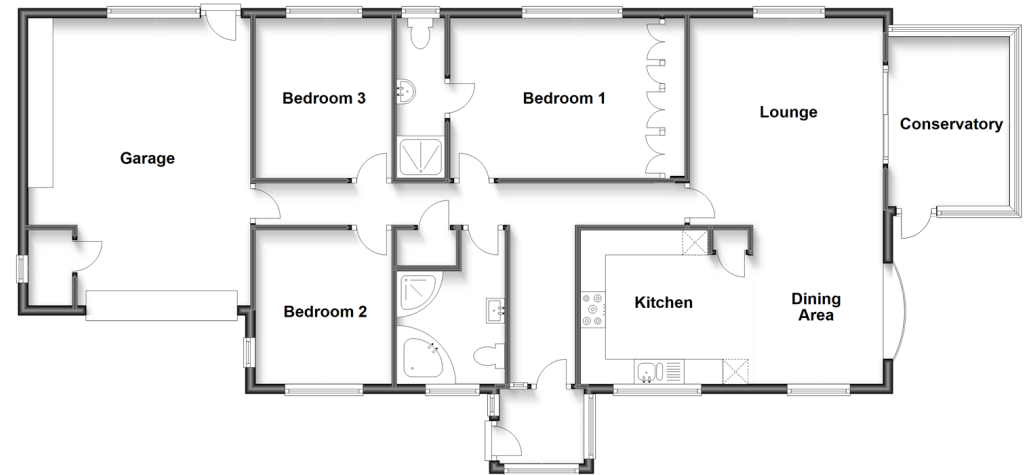
GROUND FLOOR

- Entrance Porch
- Hallway
- Bathroom
- Lounge: 13'8 x 12'11 (4.17m x 3.94m)
- Dining Area: 10'6 x 8'6 (3.20m x 2.59m)
- Kitchen: 11'0 x 10'0 (3.36m x 3.05m)
- Conservatory: 10'6 x 7'11 (3.20m x 2.41m)
- Bedroom 1: 15'5 x 10'6 (4.70m x 3.20m)
- En-Suite Shower Room
- Bedroom 2: 10'7 x 8'11 (3.23m x 2.72m)
- Bedroom 3: 10'1 x 8'11 (3.08m x 2.72m)

OUTSIDE

- Front Garden
- Driveway Parking
- Integral Garage: 18'11 x 14'7 (5.77m x 4.45m)
- Rear Garden

Ground Floor
Approx. 130.6 sq. metres (1406.1 sq. feet)



Call Newport - 01983 528888 ■ pittis.co.uk

- If buying to let, the energy rating will need to be improved to at least 'E' rating before you can let the property
- Appliances & services are untested, dimensions are approximate and floor plans are not to scale

- Legal advice should be taken to verify fixtures/fittings, planning, alterations and/or lease details
- Through a Homewise Home For Life Plan people aged 60+ can secure this property for up to 59% less, by purchasing a Lifetime Lease.



60323303/20231030/CP/NH