



Price
£175,000

Freehold

2x  1x  1x 

**Alvington Manor View,
Newport, Isle of Wight,
PO30**

OVER 60?

Secure this property
for up to **59% less!**

Pittis 
Helping you move forwards



Main features

- Conveniently located terraced house on the outskirts of Newport
- Near to schools and shops
- Allocated parking at the rear
- Enclosed rear garden
- Ideal first home or buy to let

Accommodation

GROUND FLOOR

Entrance Hall

Kitchen : 10'2 x 5'8 (3.10m x 1.73m)

Lounge/Dining Room: 18'9 x 11'11 (5.72m x 3.63m)

FIRST FLOOR

Landing

Bedroom 1: 11'11 x 8'0 (3.63m x 2.44m)

Bathroom

Bedroom 2: 11'11 x 8'10 (3.63m x 2.69m)

OUTSIDE

Front Garden

Rear Garden

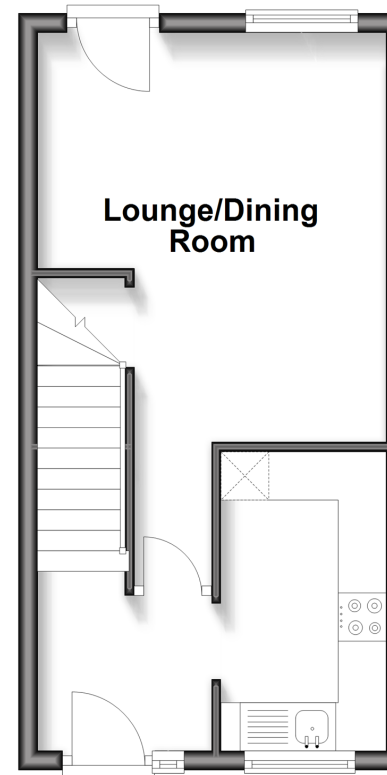
Allocated Parking

Call Newport - 01983 528888 ■ pittis.co.uk

- Legal advice should be taken to verify fixtures/fittings, planning, alterations and/or lease details
- Appliances & services are untested, dimensions are approximate and floor plans are not to scale
- Through a Homewise Home For Life Plan people aged 60+ can secure this property for up to 59% less, by purchasing a Lifetime Lease.

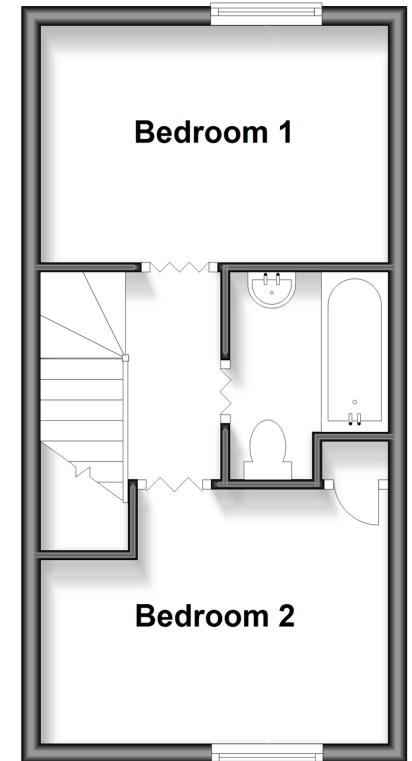
Ground Floor

Approx. 27.2 sq. metres (292.3 sq. feet)



First Floor

Approx. 27.2 sq. metres (292.3 sq. feet)



60323592/20250731/MB/NH