



Price
£215,000

Freehold

2x  1x  1x 

**The Mews, Mill Street,
Newport, Isle of Wight,
PO30**

OVER 60?

Secure this property
for up to **59% less!**

Pittis 
Helping you move forwards



Main features

- End of terrace house in Newport town centre
- Off road parking for 2 cars
- Open plan lounge/dining room with sliding doors to the garden
- Good sized primary bedroom with walk-in dressing room
- Private enclosed rear garden

Accommodation

GROUND FLOOR

Hall

Utility Area: 7'0 x 5'5 (2.14m x 1.65m)

Cloakroom

Lounge/dining room: 19'9 x 10'8 (6.02m x 3.25m)

Kitchen: 9'3 x 8'2 (2.82m x 2.49m)

FIRST FLOOR

Landing

Bathroom

Bedroom 2: 10'2 x 8'10 (3.10m x 2.69m)

Bedroom 1: 14'1 x 9'2 (4.30m x 2.80m)

Dressing Room

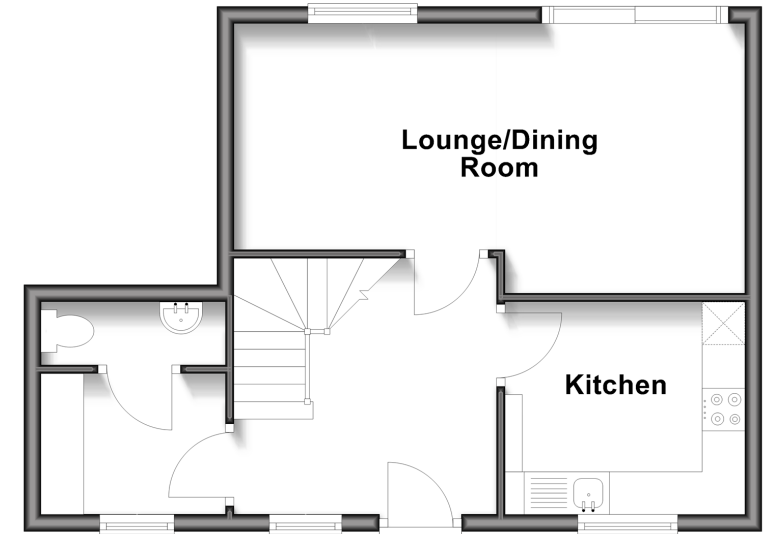
OUTSIDE

Driveway

Rear Garden

Ground Floor

Approx. 40.0 sq. metres (430.9 sq. feet)



First Floor

Approx. 40.0 sq. metres (430.9 sq. feet)



Call Newport - 01983 528888 ■ pittis.co.uk

- Legal advice should be taken to verify fixtures/fittings, planning, alterations and/or lease details
- Appliances & services are untested, dimensions are approximate and floor plans are not to scale
- Through a Homewise Home For Life Plan people aged 60+ can secure this property for up to 50% less, by purchasing a Lifetime Lease.



60323046/20251021/SC/NH