



Price
£310,000

Freehold

3x  1x  1x 

**Fieldfare Road,
Carisbrooke, Isle of
Wight, PO30**

OVER 60?

Secure this property
for up to **59% less!**

Pittis 
Helping you move forwards



Main features

- Surprisingly spacious detached bungalow
- Located in a sought after area
- Corner plot offering enclosed rear garden
- Off road parking and garage
- Good sized rooms

Accommodation

GROUND FLOOR

Hall

Lounge / Diner: (L-shaped) 13'6 x 12'8 (4.12m x 3.86m) plus 9'6 x 8'5 (2.90m x 2.57m)

Kitchen: 10'2 x 8'6 (3.10m x 2.59m)

Bedroom 1: 12'0 x 9'6 (3.66m x 2.90m)

Bedroom 2: 10'0 x 9'7 (3.05m x 2.92m)

Bedroom 3: 8'11 x 7'6 (2.72m x 2.29m)

Shower Room

OUTSIDE

Front Garden

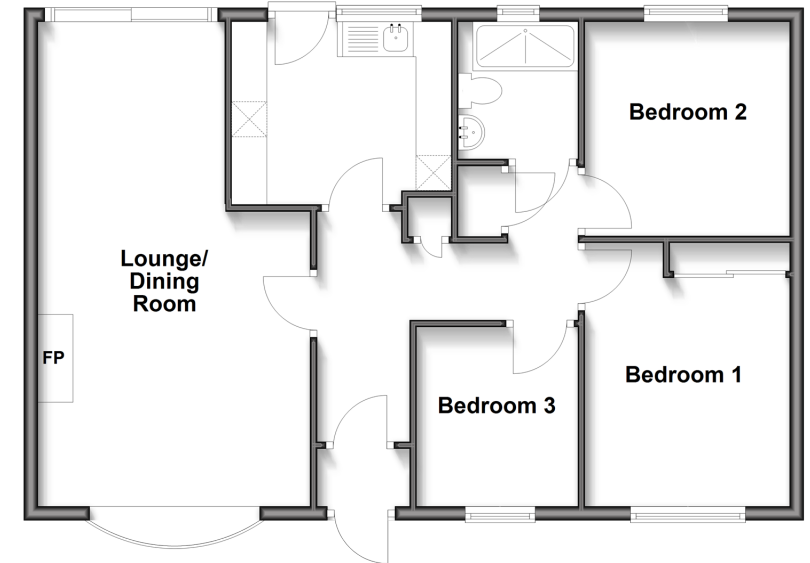
Rear Garden

Driveway

Garage: 16'0 x 9'8 (4.88m x 2.95m)

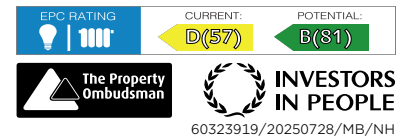
Ground Floor

Approx. 74.1 sq. metres (797.4 sq. feet)



Call Newport - 01983 528888 ■ pittis.co.uk

- Legal advice should be taken to verify fixtures/fittings, planning, alterations and/or lease details
- Appliances & services are untested, dimensions are approximate and floor plans are not to scale
- Through a Homewise Home For Life Plan people aged 60+ can secure this property for up to 59% less, by purchasing a Lifetime Lease.



60323919/20250728/MB/NH