



OVER 60?

Secure this property
for up to **59% less!**

Price
£230,000

Freehold

3x  1x  2x 

**Horsebridge Hill,
Newport, Isle of Wight,
PO30**

Pittis 
Helping you move forwards



Main features

- Immaculately presented end of terrace house
- Long rear garden and gated front garden
- Set on the edge of town accessible to local amenities and transport links
- Separate lounge and dining room
- Perfect first time home or buy to let investment

Accommodation

GROUND FLOOR

Hall

Lounge: 11'8 x 11'5 (3.56m x 3.48m)

Dining Room: 11'9 x 11'9 (3.58m x 3.58m)

Kitchen: 11'1 x 7'8 (3.38m x 2.34m)

FIRST FLOOR

Landing

Bedroom 1: 12'0 x 11'5 (3.66m x 3.48m)

Bedroom 2: 12'7 x 7'8 (3.84m x 2.34m)

Bedroom 3: 7'7 x 6'5 (2.31m x 1.96m)

Bathroom: 7'4 x 4'6 (2.24m x 1.37m)

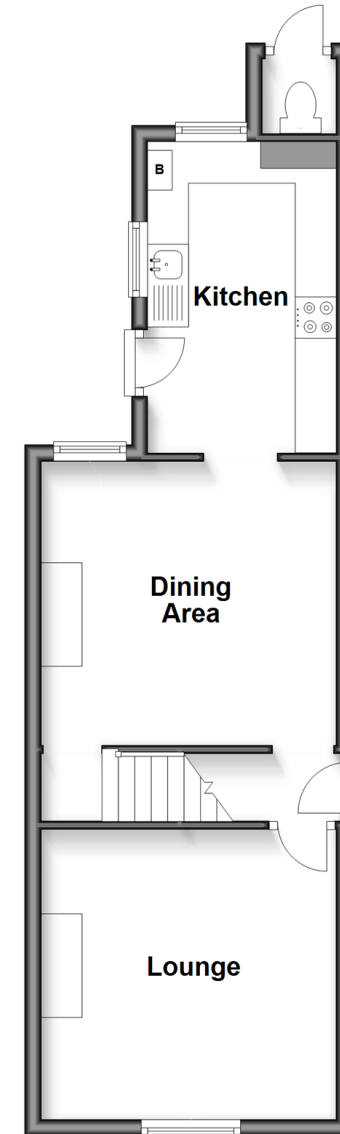
OUTSIDE

Front Garden

Rear Garden

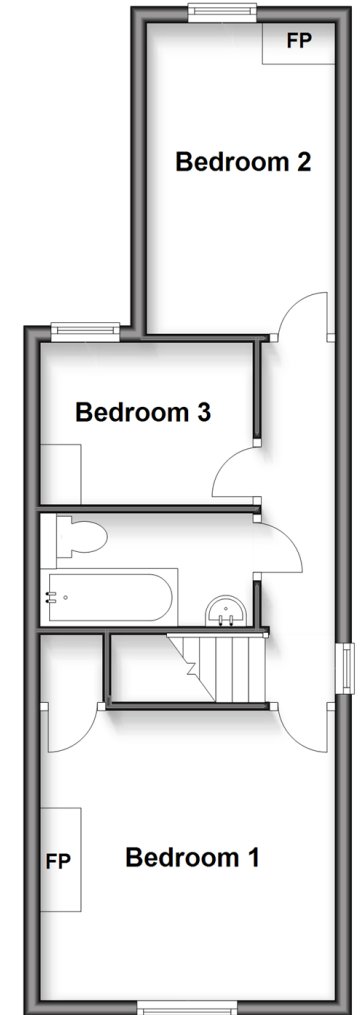
Split Level Ground Floor

Approx. 38.4 sq. metres (412.9 sq. feet)



First Floor

Approx. 37.5 sq. metres (403.3 sq. feet)



Call Newport - 01983 528888 ■ pittis.co.uk

- Legal advice should be taken to verify fixtures/fittings, planning, alterations and/or lease details
- Appliances & services are untested, dimensions are approximate and floor plans are not to scale
- Through a Homewise Home For Life Plan people aged 60+ can secure this property for up to 59% less, by purchasing a Lifetime Lease.



60323957/20250729/SC/AGAN