



**Price**  
**£435,000**

**Freehold**

4x  2x  1x 

**Clatterford Road,  
Newport, Isle of Wight,  
PO30**

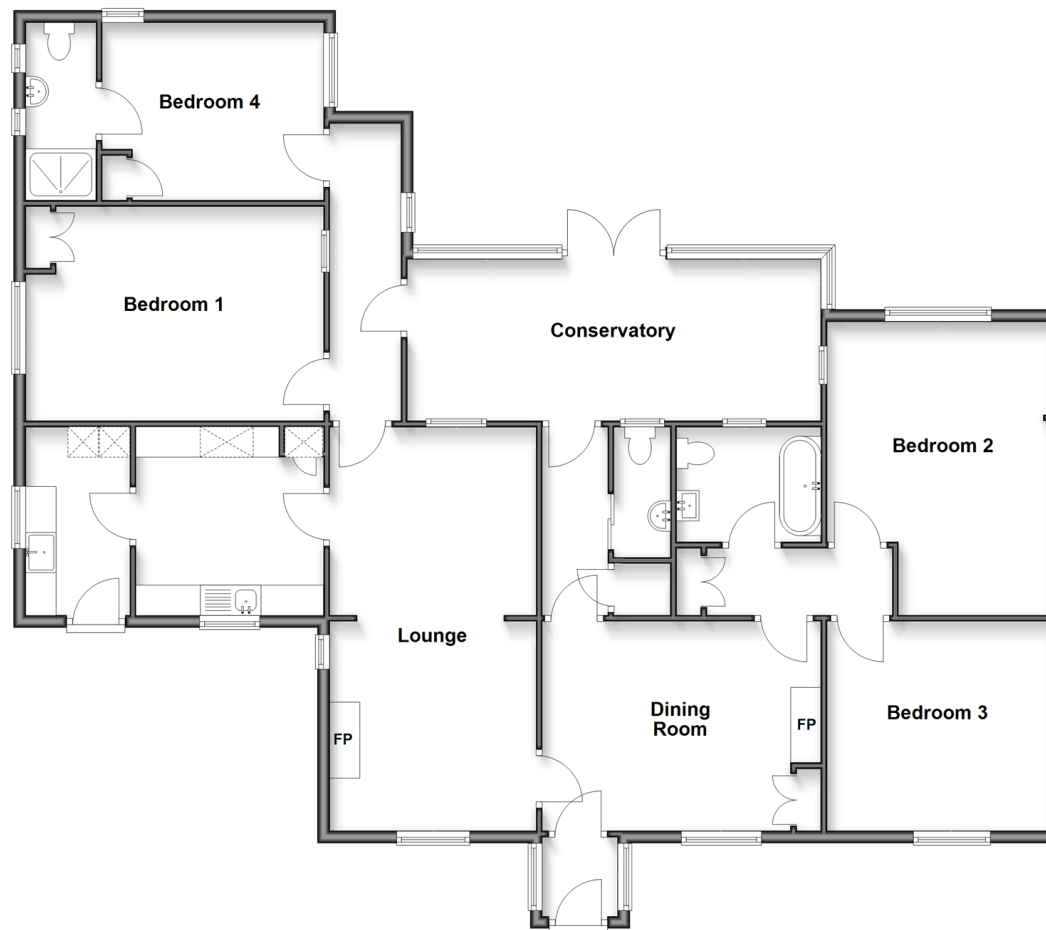
**OVER 60?**

Secure this property  
for up to **59% less!**

**Pittis**   
Helping you move forwards

### Split Level Ground Floor

Approx. 161.4 sq. metres (1736.9 sq. feet)



## Accommodation

### GROUND FLOOR

Porch

Dining Room: 15'0 x 11'4 (4.58m x 3.46m)

Hall

Cloakroom

Lounge: 22'11 x 11'5 (6.99m x 3.48m)

Kitchen: 10'1 x 9'8 (3.08m x 2.95m)

Lobby

Conservatory: 22'6 x 8'6 (6.86m x 2.59m)

Bedroom 1: 15'11 x 11'8 (4.85m x 3.56m)

Bedroom 2: 13'11 x 11'11 (4.24m x 3.63m)

Bathroom

Bedroom 3: 12'1 x 11'3 (3.69m x 3.43m)

Bedroom 4 : 11'11 x 9'7 (3.63m x 2.92m)

En-Suite

OUTSIDE

Driveway

Workshop

Garden Shed





## Main features

- Spacious detached bungalow with castle views
- Good sized lounge with open fireplace
- Bright and airy dining room/home office
- Large plot with plenty of parking and multi level seating areas
- Conveniently located just 5 minutes from Newport



### Nearest Schools

Primary Schools: Christ the King College 0.8 miles, Nodehill Middle School 1.8 miles, Downside Middle School 2.2 miles  
Secondary Schools: Carisbrooke High School 1.1 miles, St George's School 1.3 miles, Medina High School 2.4 miles

### Transport Information

Train Stations: Ryde Esplanade 7.4 miles, Brading 7.7 miles, Ryde St. Johns Road 8.5 miles  
Train Stations: Ryde Esplanade 7.4 miles, Brading 7.7 miles, Ryde St. Johns Road 8.5 miles

### Address

Clatterford Road, Newport, Isle of Wight, PO30

### Directions

For directions to this property please contact us.



