



Price

£400,000

Freehold

2x  1x  1x 

**Farriers Way, Shorwell,
Isle of Wight, PO30**

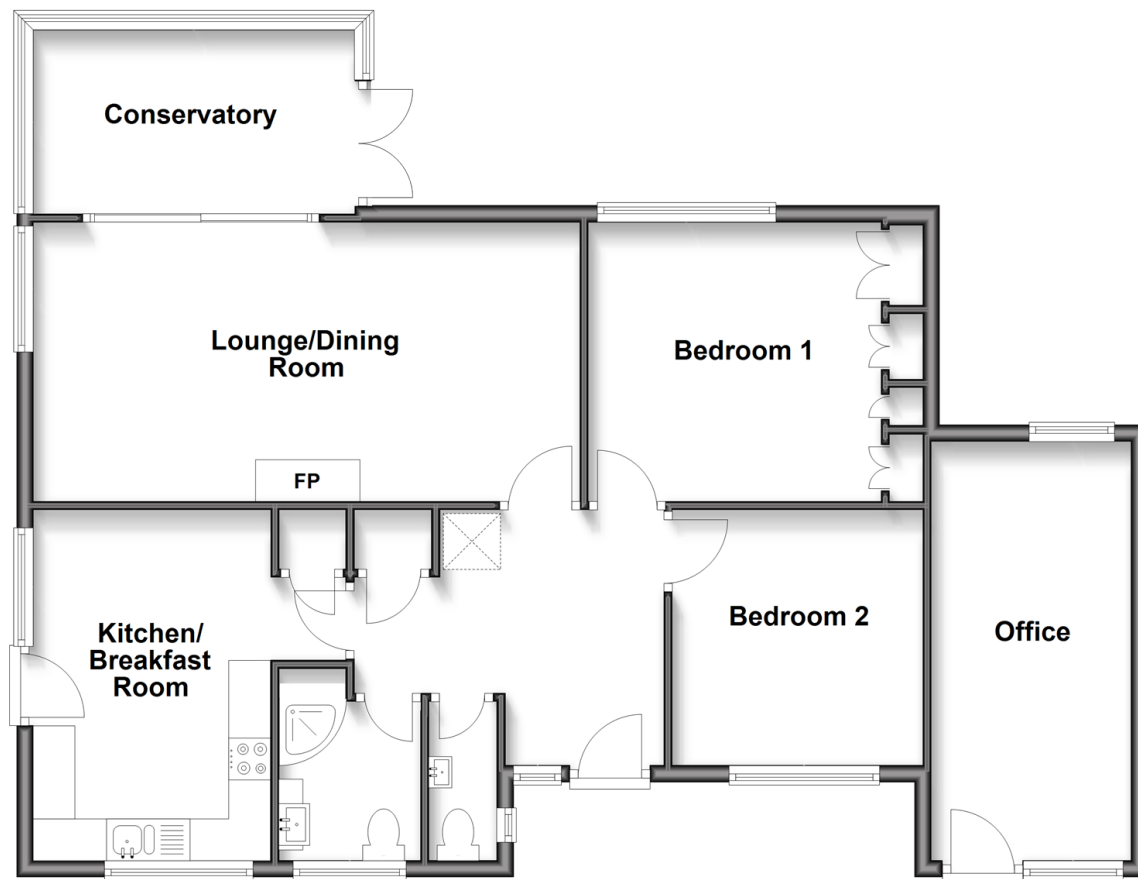
OVER 60?

Secure this property
for up to **59% less!**

Pittis 
Helping you move forwards

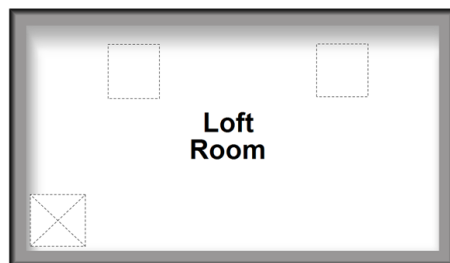
Ground Floor

Approx. 96.9 sq. metres (1042.9 sq. feet)



First Floor

Approx. 13.3 sq. metres (143.4 sq. feet)



Accommodation

GROUND FLOOR

Hallway

Cloakroom: 6'6 x 5'6 (1.98m x 1.68m)

Bedroom 2 : 10'0 x 9'10 (3.05m x 3.00m)

Bedroom 1: 11'4 x 11'0 (3.46m x 3.36m)

Shower Room: 6'5 x 5'6 (1.96m x 1.68m)

Kitchen / Breakfast Room: 13'9 x 10'0 (4.19m x 3.05m) narrowing to 3'2 x 2'11 (0.97m x 0.89m)

Lounge / Dining Room: 21'6 x 11'0 (6.56m x 3.36m)

Conservatory: 11'8 x 10'7 (3.56m x 3.23m)

FIRST FLOOR

Loft Room: 16'3 x 7'5 (4.96m x 2.26m)

OUTSIDE

Home Office: 16'7 x 7'11 (5.06m x 2.41m)

Front Garden

Rear Garden

Garden Shed

Driveway



Main features

- Beautifully presented detached bungalow
- Quiet village location
- Countryside views
- Good sized conservatory overlooking the rear garden
- Converted garage provides useful space for a home office, hobbies or fitness room



Nearest Schools

Brighstone C of E Primary School
Newport C of E Primary School
Carisbrooke College
Christ the King College
Medina College



Transport Information

Local bus routes providing Islandwide connections



Address

Farriers Way, Shorwell, Isle of Wight, PO30



Directions

For directions to this property please contact us.



Call Newport Branch 01983 528888 ■ pittis.co.uk



- Legal advice should be taken to verify fixtures/fittings, planning, alterations and/or lease details
- Appliances & services are untested, dimensions are approximate and floor plans are not to scale
- Through a Homewise Home For Life Plan people aged 60+ can secure this property for up to 59% less, by purchasing a Lifetime Lease.



60323945/20250425/DS/AG