



Price
£235,000

Freehold

2x  1x  1x 

**Buttercup Glade,
Newport, Isle of Wight,
PO30**

OVER 60?

Secure this property
for up to **59% less!**

Pittis 
Helping you move forwards



Main features

- Modern home with new build guarantee
- Popular residential area in Newport
- Driveway providing parking for two cars
- Open plan lounge and dining area overlooking the enclosed garden
- Highly efficient with biomas heating system

Accommodation

GROUND FLOOR

Entrance Hallway

Kitchen : 10'1 x 6'10 (3.08m x 2.08m)

Cloakroom

Lounge : 13'8 x 11'11 (4.17m x 3.63m)

FIRST FLOOR

Landing

Bedroom 1: 13'7 x 10'9 (4.14m x 3.28m)

Bedroom 2: 9'11 x 7'9 minimum (3.02m x 2.36m)

Bathroom

OUTSIDE

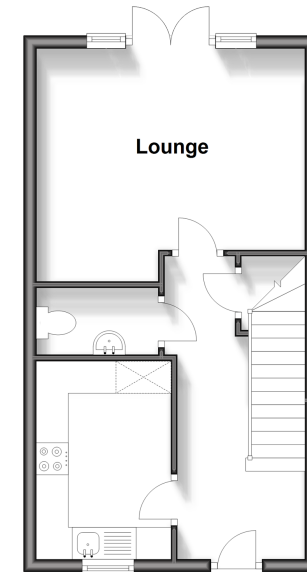
Front Garden

Rear Garden

Driveway

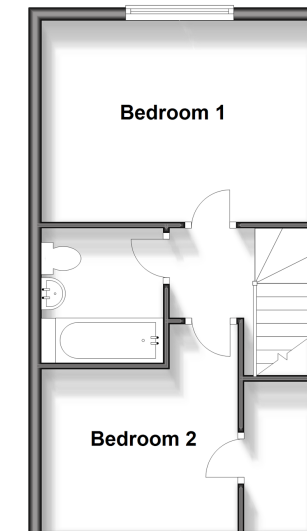
Ground Floor

Approx. 33.5 sq. metres (360.8 sq. feet)



First Floor

Approx. 33.5 sq. metres (360.8 sq. feet)



Call Newport - 01983 528888 ■ pittis.co.uk

- Legal advice should be taken to verify fixtures/fittings, planning, alterations and/or lease details
- Appliances & services are untested, dimensions are approximate and floor plans are not to scale
- Through a Homewise Home For Life Plan people aged 60+ can secure this property for up to 59% less, by purchasing a Lifetime Lease.



60323723/20250409/MMF/NH