



Price
£215,000

Freehold

2x  2x  3x 

**Quay Street, Newport,
Isle of Wight, PO30**

OVER 60?

Secure this property
for up to **59% less!**

Pittis 
Helping you move forwards



Main features

- Charming listed town house with bags of character
- Town centre location accessible to shops, restaurants and amenities
- Separate sitting room and dining room
- Surprisingly spacious accommodation
- Sun room overlooking the enclosed rear garden

Accommodation

GROUND FLOOR

Entrance Hallway
Dining Room : 12'8 x 10'7 (3.86m x 3.23m)
Sitting Room : 15'7 x 11'0 (4.75m x 3.36m)
Kitchen : 9'10 x 8'1 (3.00m x 2.47m)
Sun Room : 8'11 x 7'8 (2.72m x 2.34m)

FIRST FLOOR

Landing
Bedroom 1 : 17'2 x 12'7 (5.24m x 3.84m)
Shower Room
Bedroom 2: 12'1 x 11'0 (3.69m x 3.36m)
Bathroom

SECOND FLOOR

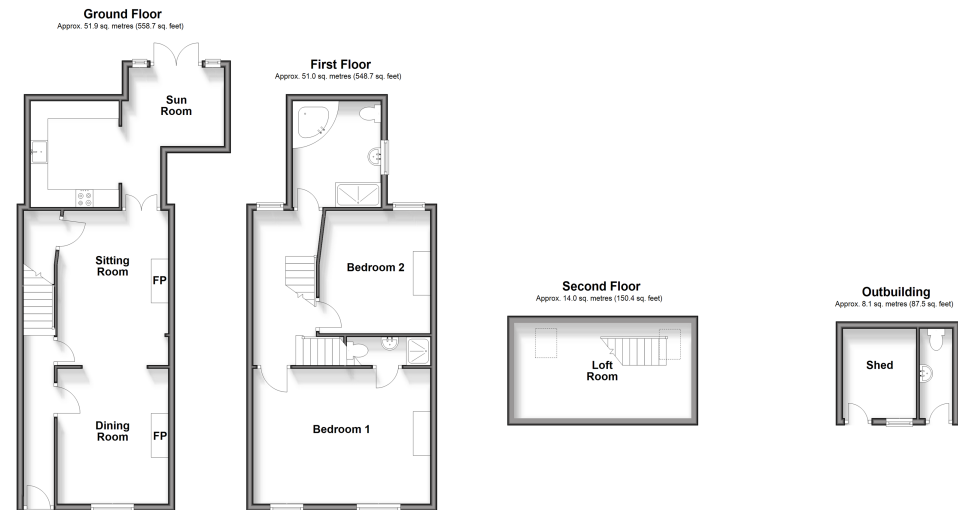
Loft Room : 17'6 x 9'8 (5.34m x 2.95m)

OUTSIDE

Rear Garden

OUTBUILDING

Shed
Cloakroom



Call Newport - 01983 528888 ■ pittis.co.uk

■ Legal advice should be taken to verify fixtures/fittings, planning, alterations and/or lease details
■ Through a Homewise Home For Life Plan people aged 60+ can secure this property for up to 59% less, by purchasing a Lifetime Lease.

■ Appliances & services are untested, dimensions are approximate and floor plans are not to scale