



OVER 60?

Secure this property
for up to **59% less!**

Price

£300,000

Freehold

3x  2x  2x 

**Brickfield Close,
Newport, Isle of Wight,
PO30**

Pittis 
Helping you move forwards



Main features

- Modern end of terrace house in a quiet location
- Garage and parking en-bloc
- Lovely open plan kitchen and dining room
- Separate lounge with double doors onto garden
- Enclosed spacious garden to the rear

Accommodation

GROUND FLOOR

Entrance Hallway

Lounge : 15'10 x 10'0 (4.83m x 3.05m)

Kitchen / Dining Room : 15'10 x 6'11 (4.83m x 2.11m)

Cloakroom

FIRST FLOOR

Landing

Bedroom 1: 13'0 x 10'11 (3.97m x 3.33m)

En-Suite Shower Room

Bedroom 2: 10'11 x 10'0 (3.33m x 3.05m)

Bedroom 3: 7'0 x 6'5 (2.14m x 1.96m)

Bathroom

OUTSIDE

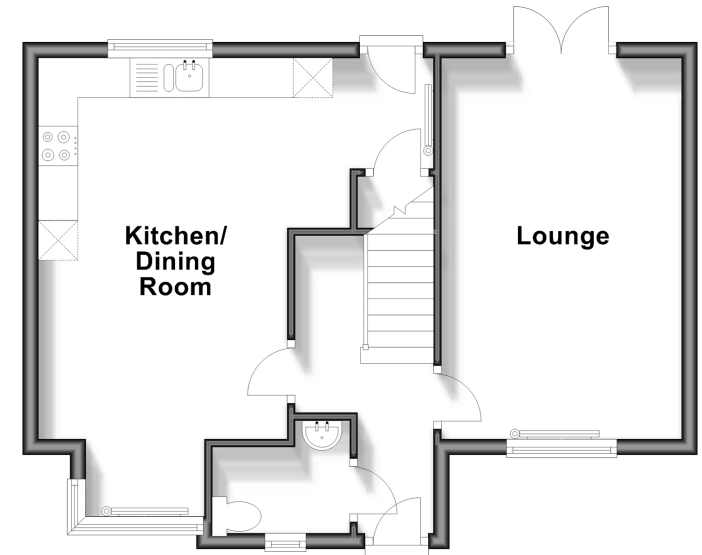
Front Garden

Rear Garden

Garage En-bloc

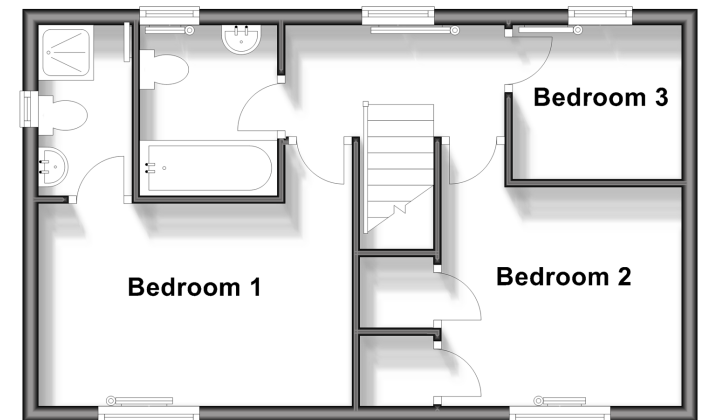
Ground Floor

Approx. 44.1 sq. metres (475.2 sq. feet)



First Floor

Approx. 39.2 sq. metres (422.5 sq. feet)



Call Newport - 01983 528888 ■ pittis.co.uk

- Legal advice should be taken to verify fixtures/fittings, planning, alterations and/or lease details
 - Appliances & services are untested, dimensions are approximate and floor plans are not to scale
- Through a Homewise Home For Life Plan people aged 60+ can secure this property for up to 59% less, by purchasing a Lifetime Lease.



60323836/20250107/JH/NH