



OVER 60?

Secure this property
for up to **59% less!**

Price

£425,000

Freehold

4x  2x  3x 

**Sylvan Drive, Newport,
Isle of Wight, PO30**

Pittis 
Helping you move forwards



Main features

- Stunning detached family home
- Immaculate condition with family bathroom and en-suite shower room
- Integral garage and driveway parking
- Open plan kitchen onto sun room
- Set on the edge of town close to shops, schools and amenities

Accommodation

GROUND FLOOR

Entrance Hallway
 Dining Room : 11'0 x 7'5 (3.36m x 2.26m)
 Lounge : 17'0 x 14'0 (5.19m x 4.27m)
 Kitchen : 16'0 x 8'0 (4.88m x 2.44m)
 Sun Room : 13'0 x 12'0 (3.97m x 3.66m)
 Cloakroom
 Garage

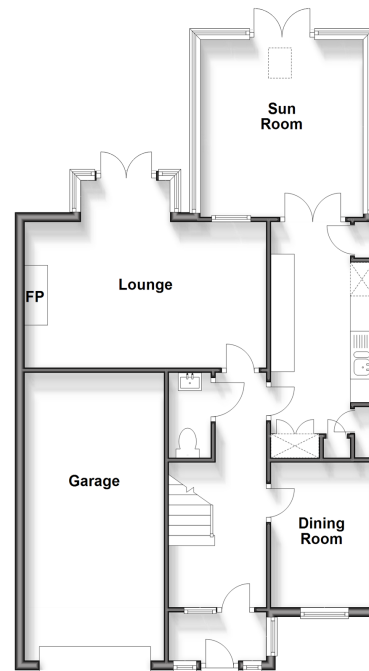
FIRST FLOOR

Landing
 Bedroom 1 : 11'0 x 9'0 (3.36m x 2.75m)
 En-suite Shower Room
 Bedroom 2 : 11'0 x 10'0 (3.36m x 3.05m)
 Bathroom
 Bedroom 3 : 12'0 x 9'0 (3.66m x 2.75m)
 Bedroom 4 : 13'0 x 11'0 (3.97m x 3.36m)

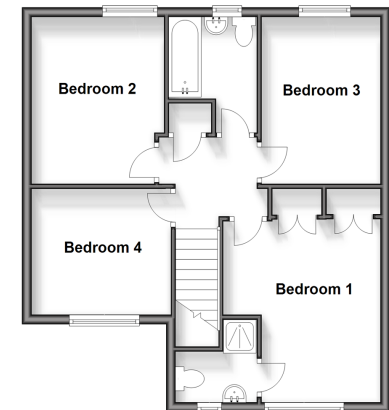
OUTSIDE

Front Garden
 Rear Garden
 Greenhouse
 Driveway

Ground Floor
 Approx. 81.1 sq. metres (873.3 sq. feet)



First Floor
 Approx. 54.8 sq. metres (589.3 sq. feet)



Call Newport - 01983 528888 ■ pittis.co.uk

■ Legal advice should be taken to verify fixtures/fittings, planning, alterations and/or lease details
 ■ Through a Homewise Home For Life Plan people aged 60+ can secure this property for up to 59% less, by purchasing a Lifetime Lease.

■ Appliances & services are untested, dimensions are approximate and floor plans are not to scale



60323809/20241121/JH/RC