



Price
£235,500

Freehold

2x  1x  1x 

**Westmill Road,
Carisbrooke, Isle of
Wight, PO30**

OVER 60?

Secure this property
for up to **59% less!**

Pittis 
Helping you move forwards



Main features

- Detached bungalow with low maintenance enclosed rear garden
- Offered chain free
- Double glazed conservatory and modern fitted shower room
- Garage and driveway providing plenty of parking
- Situated in a popular residential area

Accommodation

GROUND FLOOR

Entrance Hallway

Lounge/ Diner : 19'8 x 11'7 (6.00m x 3.53m)

Kitchen : 11'0 x 10'1 (3.36m x 3.08m)

Bathroom

Bedroom 1 : 13'11 x 11'0 (4.24m x 3.36m)

Bedroom 2 : 10'11 x 8'5 (3.33m x 2.57m)

Conservatory : 13'11 x 11'0 (4.24m x 3.36m)

OUTSIDE

Front Garden

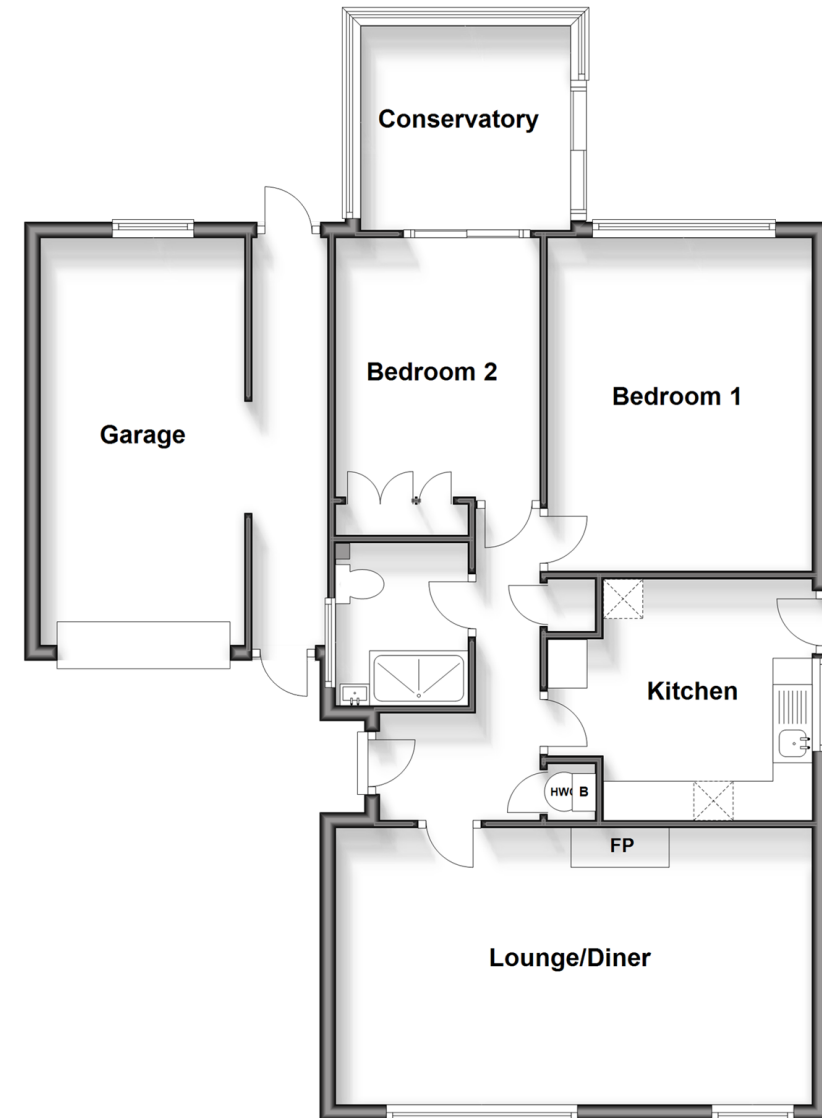
Rear Garden

Driveway

Garage

Ground Floor

Approx. 93.2 sq. metres (1002.8 sq. feet)



Call Newport - 01983 528888 ■ pittis.co.uk

- Legal advice should be taken to verify fixtures/fittings, planning, alterations and/or lease details
- Appliances & services are untested, dimensions are approximate and floor plans are not to scale
- Through a Homewise Home For Life Plan people aged 60+ can secure this property for up to 59% less, by purchasing a Lifetime Lease.



60323711/20250115/RC/NH