



**Price**  
**£295,000**

**Freehold**

3x  1x  2x 

**Whitesmith Road,  
Newport, Isle of Wight,  
PO30**

**OVER 60?**

Secure this property  
for up to **59% less!**

**Pittis**   
Helping you move forwards





## Main features

- **Spacious semi- detached period home in popular location**
- **Large open plan kitchen, dining area and separate lounge**
- **Driveway to the front**
- **Downstairs cloakroom and separate family bathroom upstairs**
- **Lovely enclosed garden with seating area and summer house**

## Accommodation

### GROUND FLOOR

Entrance Hallway

Lounge : 14'5 x 11'9 (4.40m x 3.58m)

Kitchen : 9'5 x 8'11 (2.87m x 2.72m)

Dining Area : 13'1 x 9'5 (3.99m x 2.87m)

Downstairs Cloakroom

### FIRST FLOOR

Landing

Bedroom 1 : 12'0 x 10'9 (3.66m x 3.28m)

Bedroom 2 : 12'10 x 10'4 (3.91m x 3.15m)

Bedroom 3 : 9'6 x 7'8 (2.90m x 2.34m)

Bathroom

### OUTSIDE

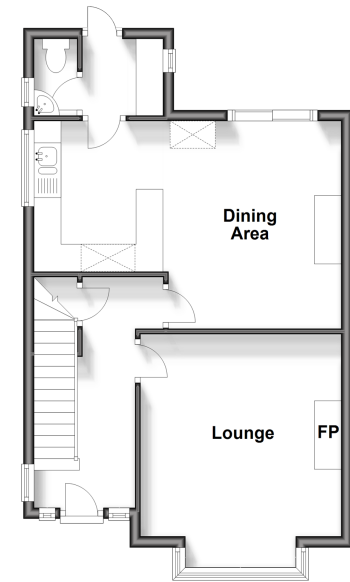
Driveway

Rear Garden

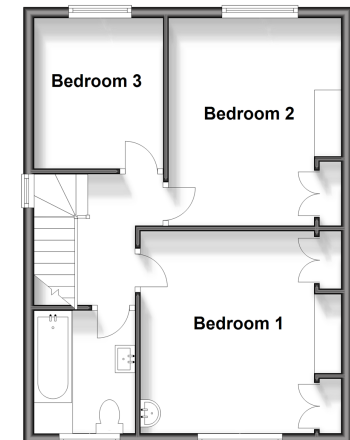
Summer House

Greenhouse

**Ground Floor**  
Approx. 47.1 sq. metres (506.8 sq. feet)



**First Floor**  
Approx. 43.4 sq. metres (466.7 sq. feet)



**Call Newport - 01983 528888 ■ [pittis.co.uk](http://pittis.co.uk)**

- Legal advice should be taken to verify fixtures/fittings, planning, alterations and/or lease details
- Appliances & services are untested, dimensions are approximate and floor plans are not to scale
- Through a Homewise Home For Life Plan people aged 60+ can secure this property for up to 59% less, by purchasing a Lifetime Lease.



60322126/20240716/JH/NH