



Price
£250,000

Freehold

3x  1x  1x 

**Linnet Close, Newport,
Isle of Wight, PO30**

OVER 60?

Secure this property
for up to **59% less!**

Pittis 
Helping you move forwards



Main features

- End of terrace house with driveway and carport
- Cul-de-sac location with easy access to amenities and schools
- Large conservatory overlooking the enclosed garden
- Open plan lounge/diner
- Perfect for first time buyers or investors

Accommodation

GROUND FLOOR

Entrance Hallway

Kitchen : 9'4 x 8'9 (2.85m x 2.67m)

Lounge/Diner : 15'8 x 15'3 (4.78m x 4.65m)

Conservatory

FIRST FLOOR

Landing

Bedroom 1: 12'1 x 9'3 (3.69m x 2.82m)

Bedroom 2: 11'3 x 9'3 (3.43m x 2.82m)

Bedroom 3 : 9'8 x 5'11 (2.95m x 1.80m)

Bathroom

OUTSIDE

Driveway

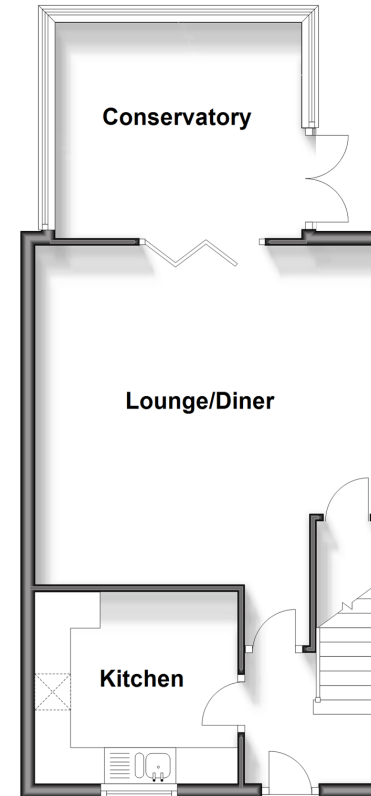
Carport

Front Garden

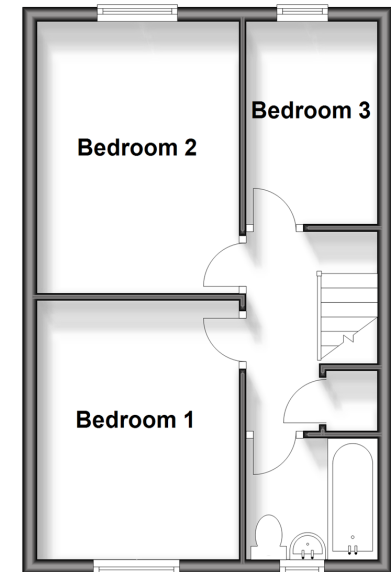
Rear Garden

Shed

Ground Floor
Approx. 46.3 sq. metres (498.5 sq. feet)



First Floor
Approx. 35.6 sq. metres (383.6 sq. feet)



Call Newport - 01983 528888 ■ pittis.co.uk

- Legal advice should be taken to verify fixtures/fittings, planning, alterations and/or lease details
- Appliances & services are untested, dimensions are approximate and floor plans are not to scale
- Through a Homewise Home For Life Plan people aged 60+ can secure this property for up to 59% less, by purchasing a Lifetime Lease.



60314433/20241001/RC/JG