



Price

£205,000

Leasehold

3x  1x  2x 

Whitepit Lane, Newport,
Isle of Wight, PO30

OVER 60?

Secure this property
for up to **59% less!**


Pittis
Helping you move forwards



Main features

- Large ground floor garden apartment
- Separate lounge and dining room
- Private allocated parking and good sized private garden
- Spacious accommodation throughout viewings highly recommended

Accommodation

GROUND FLOOR

Entrance Hallway

Cloakroom

Dining Room : 11'10 x 9'11 (3.61m x 3.02m)

Kitchen : 10'0 x 8'0 (3.05m x 2.44m)

Bedroom 1 : 12'10 x 12'10 (3.91m x 3.91m)

Bedroom 2 : 13'0 x 12'11 (3.97m x 3.94m)

Bedroom 3: 12'10 x 12'10 (3.91m x 3.91m)

Lounge: 13'1 x 12'9 (3.99m x 3.89m)

Bathroom

OUTSIDE

Front Garden

Rear Garden

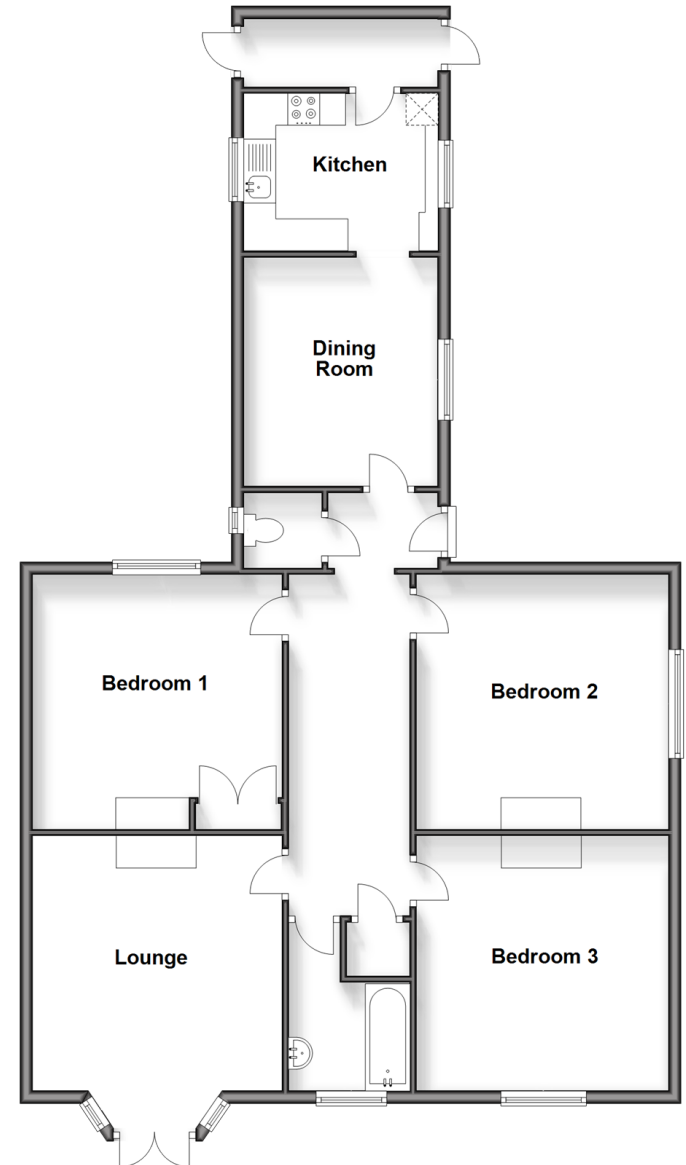
Sheds

Allocated Parking

Call Newport - 01983 528888 ■ pittis.co.uk

- If buying to let, the energy rating will need to be improved to at least 'E' rating before you can let the property
- Legal advice should be taken to verify fixtures/fittings, planning, alterations and/or lease details
- Appliances & services are untested, dimensions are approximate and floor plans are not to scale
- Through a Homewise Home For Life Plan people aged 60+ can secure this property for up to 59% less, by purchasing a Lifetime Lease.

Ground Floor
Approx. 107.9 sq. metres (1161.2 sq. feet)



60321805/20240621/JH/NH