



Price
£225,000

Freehold

3x  1x  1x 

Castle Road, Newport,
Isle of Wight, PO30

OVER 60?

Secure this property
for up to **59% less!**


Helping you move forwards



Main features

- Terraced house offered chain free
- First floor bathroom and ground floor cloakroom
- Easy to maintain with enclosed rear garden
- Good location on the edge of town close to local amenities
- Views overlooking the green from the front windows

Accommodation

GROUND FLOOR

Entrance Hall

Lounge: 11'0 x 8'0 (3.36m x 2.44m)

Kitchen/Dining Room: 13'0 maximum x 12'0 maximum (3.97m x 3.66m) narrowing to 8'0 minimum x 7'0 minimum (2.44m x 2.14m)

Cloakroom

FIRST FLOOR

Landing

Bedroom 1: 13'0 x 11'0 (3.97m x 3.36m)

Bedroom 2: 12'0 x 9'0 (3.66m x 2.75m)

Bedroom 3: 9'0 x 5'0 (2.75m x 1.53m)

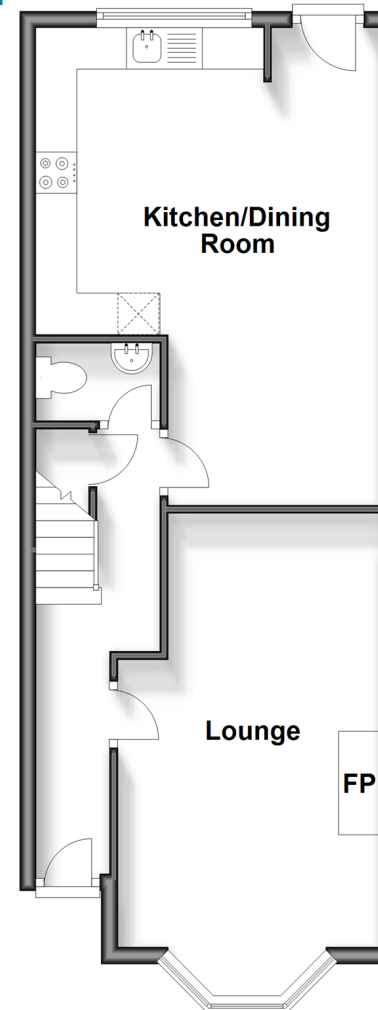
Bathroom

OUTSIDE

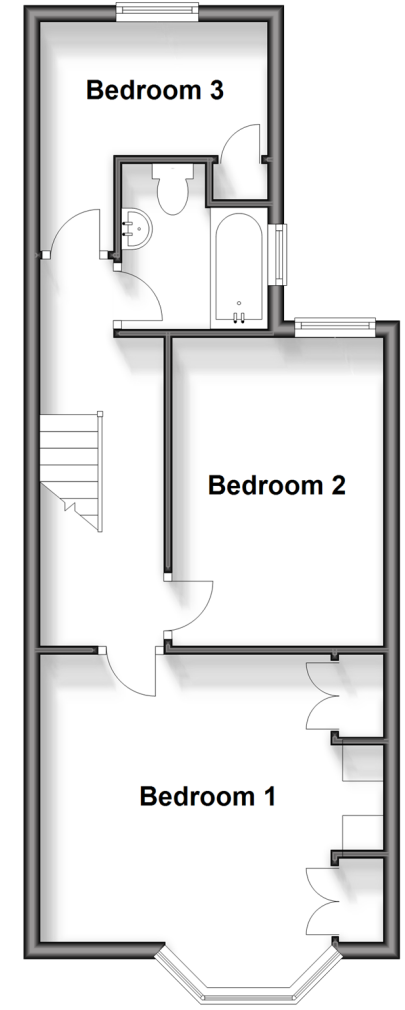
Front Garden

Rear Garden

Ground Floor
Approx. 45.9 sq. metres (494.3 sq. feet)



First Floor
Approx. 41.5 sq. metres (446.3 sq. feet)



Call Newport - 01983 528888 ■ pittis.co.uk

- Legal advice should be taken to verify fixtures/fittings, planning, alterations and/or lease details
- Appliances & services are untested, dimensions are approximate and floor plans are not to scale
- Through a Homewise Home For Life Plan people aged 60+ can secure this property for up to 59% less, by purchasing a Lifetime Lease.



60323629/20240606/JH/AG